

Healthcare

Specification Guide to Floors, Walls & Accessories

gerflor.co.uk
gerflor.ie
gradus.com



Gerflor[®]

GRADUS



GRADUS
A Gerflor company

FUNDAMENTALS

A FUSION OF PRODUCTS & VALUES

Gerflor and Gradus offer products which are ideal for use in a wide variety of applications across a healthcare facility. Products can be combined to provide a complete package that balances performance, aesthetics and cost alongside environmentally responsible manufacturing processes.

A FRESH APPROACH

We believe passionately in providing the customer with the very best in terms of service. Through our combined team we can offer expert advice to help with product selection backed up with extensive UK stocks to ensure our products are delivered on-time, every-time.



[View the video...](#)



A NEW LEVEL OF
INNOVATION,
QUALITY, SERVICE
& TEAMWORK



SUREPROTECT
WALL GUARDS
CORNER GUARDS
HANDRAILS
DOOR PROTECTION
BED HEAD PROTECTORS



MIPOLAM
TARASAFE
TARAFLEX
DLW
TARALAY
CREATION LVT





Gerflor & Gradus - The Healthcare Specialists

With over 100 years' of combined experience in the healthcare sector, together we have built an unrivalled reputation for quality and service.

The Gerflor group is well known as a credible and valued supplier of complete

flooring solutions designed specifically for the healthcare market. The constraints of hygiene, slip resistance and acoustic qualities are part of mandatory characteristics for this sector. Our expertise allows us to offer numerous flooring products suitable for all areas of a healthcare facility. Whilst maintaining the technical performance and the design

aspect of our floorcoverings, we manufacture our ranges with the environment in mind, as well as the health and wellbeing of end users. We have recognised brands ideal for healthcare facilities, including our Mipolam, DLW, Taralay, Taraflex® and Tarasafe flooring ranges.

Gradus is a UK manufacturer of contract interior solutions,

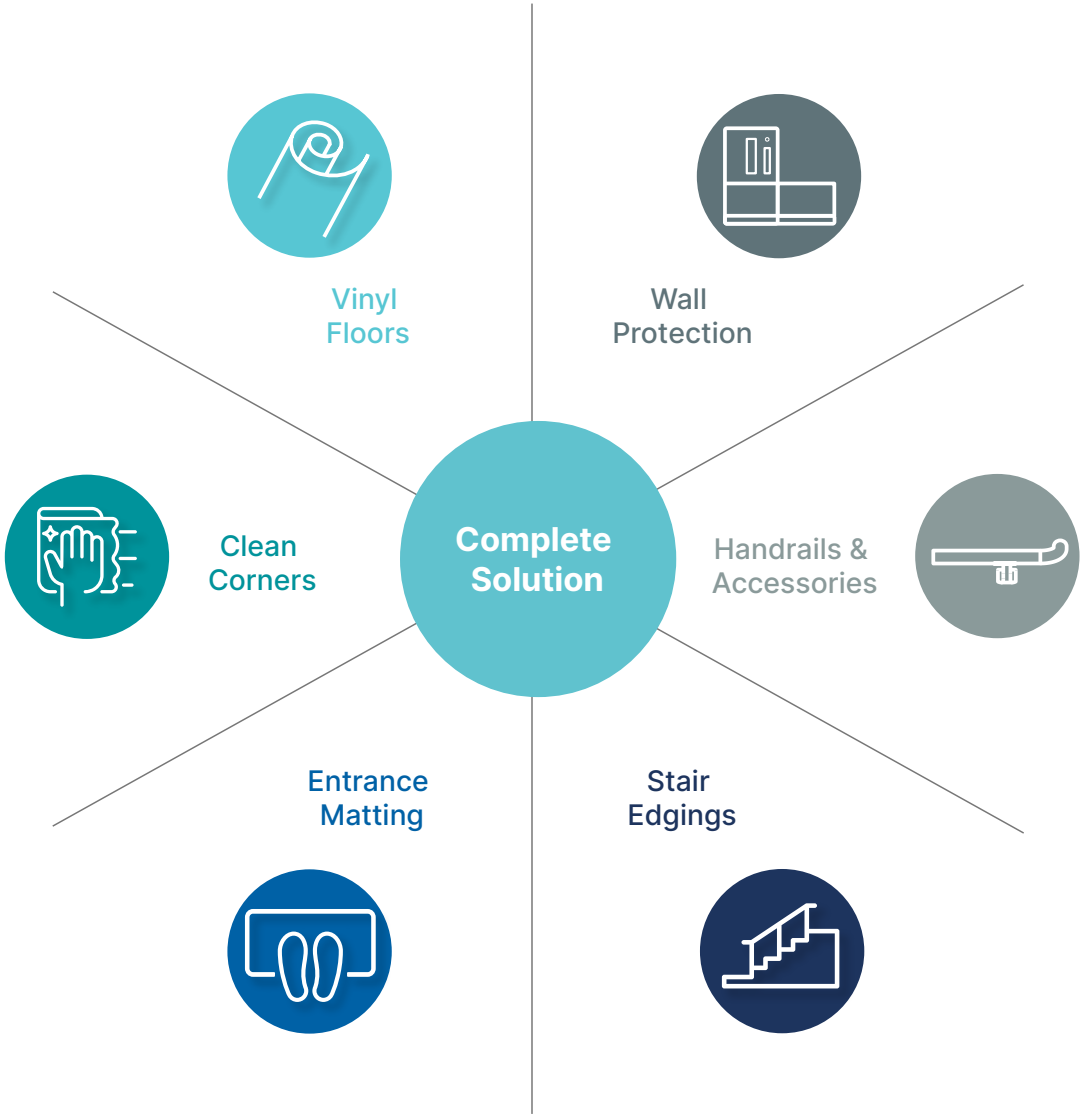
these include wall protection, stair edgings, floor trims, barrier matting and LED lighting. As the largest UK Manufacturer of Wall Protection we are able to offer a comprehensive range which includes textured wall cladding, hygienic cladding, handrails, dual rails, combination rails, wall guards, corner guards, bed protectors and door protection. Gradus control the design of

profiles from initial concept through to finished products including specialist CAD design and the manufacture of tooling. This ensures that quality is maintained and provides customers with an efficient, flexible, and fast service. We also offer a project management and installation service for our wall protection systems.

Our tried and trusted Healthcare Solutions

Complete Solution

Gerflor, along with our partner Gradus, is able to offer a complete floor and walls solution that can contribute to a clean and safe building environment.



Gerflor and Gradus Services

Technical & Specification Support Specialists

Gerflors' dedicated Healthcare specialists are able to assist you with all your specification needs. Whether it's a new build or refurbishment project we have the expertise and innovations to meet all budgets. Hand in hand with our partners, we work together to propose the optimum solution for the clients needs utilising the most appropriate safe, hygienic and sustainable solutions for the specific applications. We don't stop at just providing specification advice, we can also provide a free site survey, we will visit, assess and audit the facility and make improvement to future proof the building interiors.



The Technical Support team is available to offer advice on the specification and installation of products, including guidance on the latest healthcare building standards and legislation. Be rest assured that Gerflor has a world class pedigree of products that are tried and trusted and deliver each and every time, all backed up by a network of technical, specification and customer support teams.

Sampling Support Services For Every Need

We offer a free sample service for all our healthcare clients. Whether it's a range overview binder, loose sample (standard or bespoke), supporting literature or if it is something bespoke you need like a mood board or test material, contact us and we will aim to supply the sample for your required need. To request an actual sample, literature or anything else, email contractuk@gerflor.com or call 01625 428922 or visit the sample website by clicking here [FREESAMPLES](#)

Specification Documents and BIM Objects

As an NBS partner you have access to a single source for product information and incorporates the Gerflor and Gradus products. NBS Source provides an additional level of enhanced product data, in a consistent, structured format that will integrate seamlessly into your project workflow.



[Click here](#) to view Gerflor's products on NBS Source



[Click here](#) to view Gradus' products on NBS Source

Local Stock for Healthcare Best Sellers

Gerflor have stock in place locally in UK for our best healthcare selling ranges. A new warehousing and distribution facility based in Winsford offers a broad range of in-depth stock to provide an enhanced service level to our customers. Essential when time is of the essence and our customers need innovative products and fast delivery for those essential quick turn around projects. Speak to our healthcare specialists for stock availability or any further information needs.



Gerflor and Gradus Services

CPD's and Training

As members of RIBA CPD Providers Network we offer a full range of RIBA assessed and approved CPD seminars covering: Vinyl Flooring, Sports Flooring, Matting, Wall Protection, Stair Edgings and Industry specific CPDs such as Healthcare and Industry.

To book a CPD Seminar, contact our Technical Support department on 01625 428922 or Email: contractuk@gerflor.com or imail@gradus.com



Stair Edgings



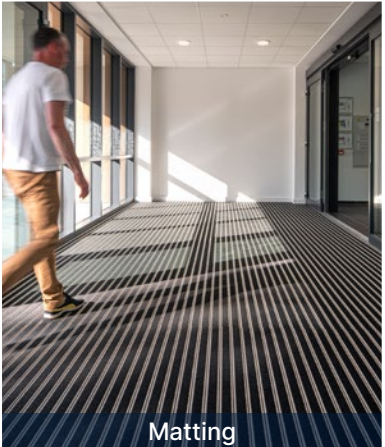
Healthcare



Vinyl Flooring



Industrial Flooring



Matting



Wall Protection



Sport Flooring

Accreditations and Certifications

Gerflor

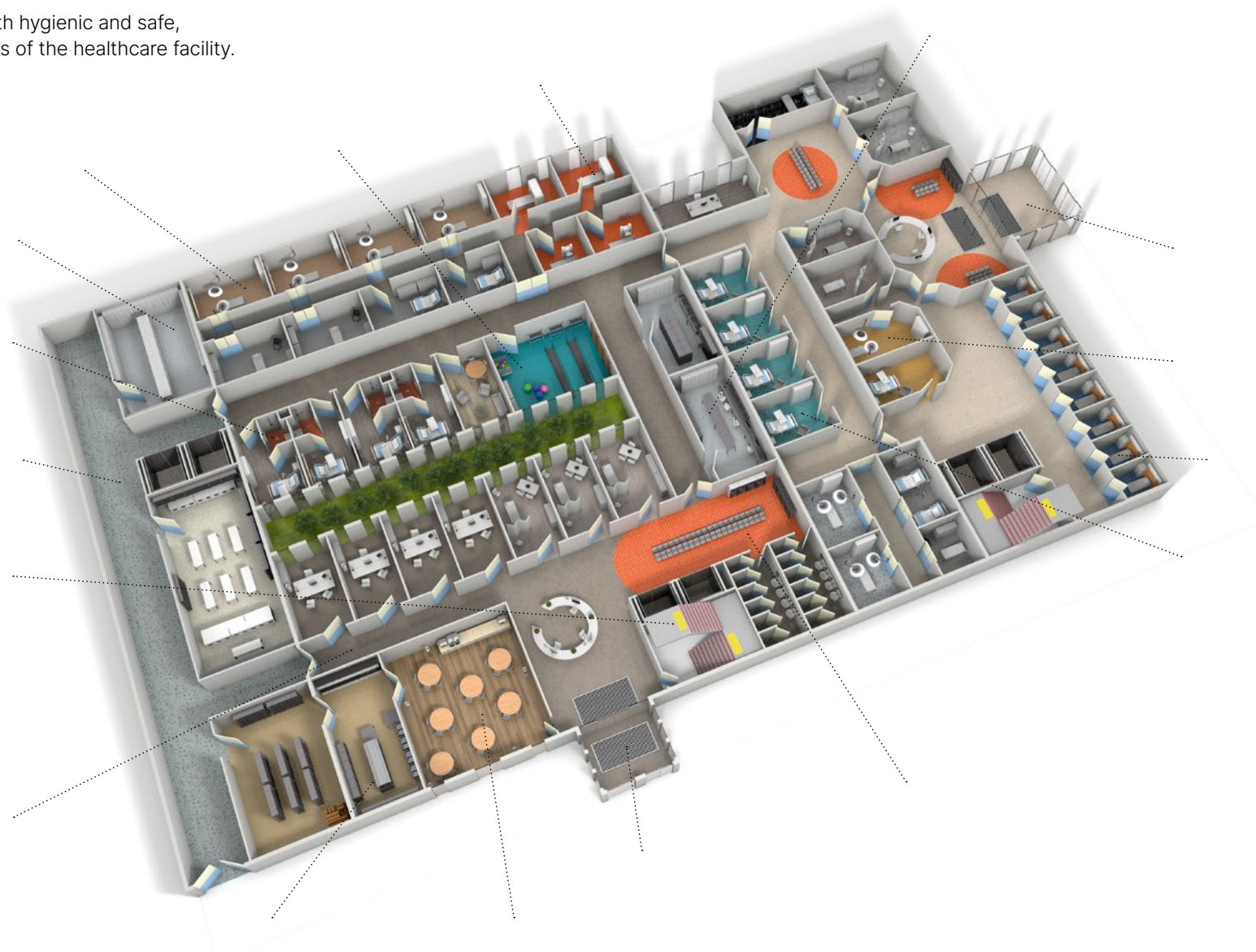


Gradus



Comprehensive Healthcare Solutions

The Gerflor & Gradus ranges are both hygienic and safe,
our solutions are suitable for all areas of the healthcare facility.



Click on the relevant
icon for the ideal
product solutions



Entrance & Reception Areas

Key considerations when selecting Flooring and Wall Protection products for Entrance & Reception Areas

- ✓ A bright, calm and welcoming environment
- ✓ Resistance to heavy traffic
- ✓ Good slip resistance on floors
- ✓ Practical in design to facilitate building access
- ✓ Protecting walls and corners that are vulnerable to damage
- ✓ Zoning and navigation assistance

Complementary Products

Gerflor Clean Corner System* - [click here](#)

Gerflor Surface Treatments Vinyl - [click here](#)

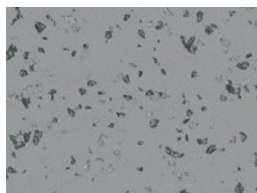
Gradus Sit-On Skirting - [click here](#)

**Applicable for Taralay Premium only*

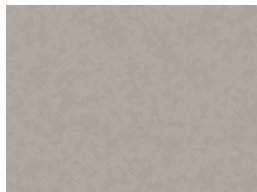
Resilient Flooring

Taralay Premium Compact

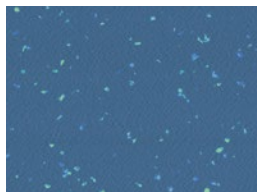
Perfect for extreme traffic resistance, comes with the Evercare™ surface treatment for an unrivaled level of chemical and stain resistance.



2751 Slam



4350 Elefant



4476 Wattaru



8386 Boa Vista

To see the full range - [click here](#)

Creation 70 Dryback LVT

Best in Class LVT for a warm and contemporary finish for front of house applications, suitable for heavy foot traffic.



0577 Albion



0561 Carassi



0360 Deep Forest



0535 Douglas

To see the full range - [click here](#)

Wall Protection

Selecting the right product

Entrance & reception areas are often subject to scuffs and scrapes from tables, chairs and other moveable objects. Corner & edges are also vulnerable to damage from deliveries and other wheeled traffic entering the building.

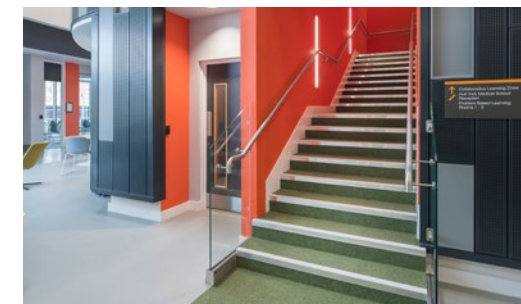


- 1 SureProtect Artworx (print option) - [click here](#)
- 2 Timber Handrail - [click here](#)
- 3 SureProtect Design® (wood effect) - [click here](#)
- 4 Standard PVC-u Corner Guard - [click here](#)
- 5 Wall Strip - [click here](#)

Other Products

XT™ Aluminium Stair Edgings

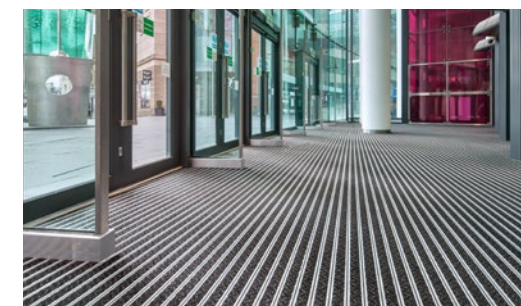
The Gradus XT range of stair edgings offers the ultimate solution in reducing slips, trips and falls on stairs.



To see the full range - [click here](#)

Entrance Matting

An effective barrier matting system, when correctly specified, will help to minimise the risk of slip accidents caused by wet flooring.



To see the full range - [click here](#)

Waiting Rooms

Key considerations when selecting Flooring and Wall Protection for Waiting Rooms

- ✓ A bright, calm and welcoming environment
- ✓ Resistance to heavy traffic
- ✓ Good slip resistance on floors
- ✓ Practical in design to facilitate building access
- ✓ Protecting walls and corners that are vulnerable to damage
- ✓ Zoning and navigation assistance

Complementary Products

Gerflor Clean Corner System* - [click here](#)

Gerflor Surface Treatments Vinyl - [click here](#)

Gerflor Surface Treatments Linoleum - [click here](#)

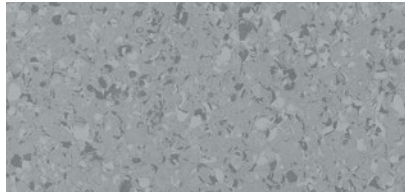
Gradus Sit-On Skirting - [click here](#)

*Applicable for Mipolam Affinity only

Resilient Flooring

Mipolam Affinity

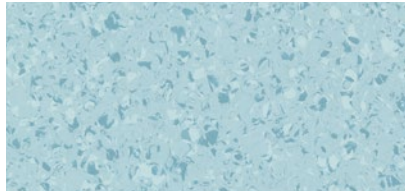
Palette of 50 non directional colours for freedom of design. Treated with Evercare™ surface for easy maintenance.



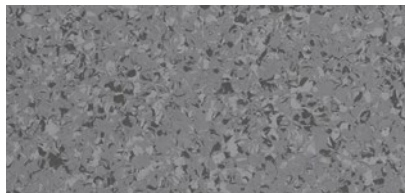
4430 Pearl Grey



4424 Smoked Opal



4417 Aquamarine

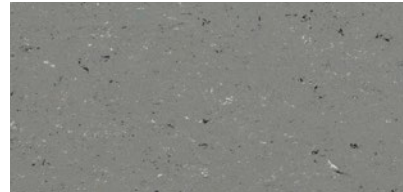


4434 Cast Iron

To see the full range - [click here](#)

DLW Colorette

Palette of 19 vivid colours to awaken any interior. Best in class micro-scratch and stain resistance thanks to Neocare™ finish.



0059 Stone Grey



0132 Spicy Green



0170 Kumquat Orange



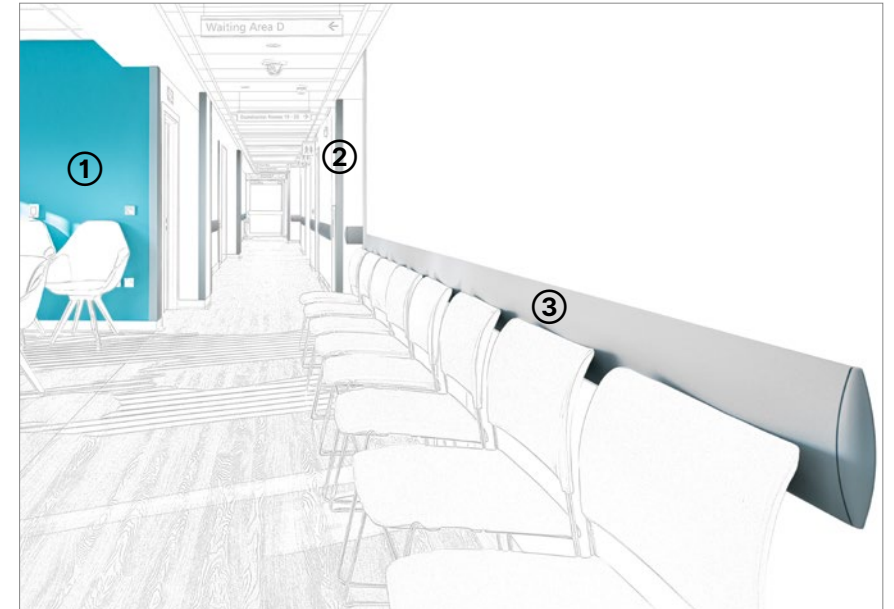
0123 Poppy Blue

To see the full range - [click here](#)

Wall Protection

Selecting the right product

Waiting areas are often subject to scuffs and scrapes from chairs and other moveable objects. Corners and edges are also vulnerable due to high levels of people and wheeled traffic.



1 SureProtect Endure® Wall Cladding - [click here](#)

1 SureProtect Design® Wall Cladding - [click here](#)

2 High Impact PVC-u Corner Guard - [click here](#)

3 PVC-u Wall Guard - [click here](#)

Corridors

Key considerations when selecting Flooring and Wall Protection for Corridors

- ✓ Selected products need to deal with heavy traffic both pedestrian and wheeled
- ✓ Products should offer zoning and navigation assistance
- ✓ Flooring must be slip resistant and be able to cope with heavy rolling loads
- ✓ Robust Wall Protection system to protect vulnerable walls and corners
- ✓ Handrails for guidance and support

Complementary Products

Gerflor Clean Corner System* - [click here](#)

Gerflor Surface Treatments Vinyl - [click here](#)

Gerflor Surface Treatments Linoleum - [click here](#)

Gradus Cove Formers & Caps - [click here](#)

**Applicable for Mipolam Affinity only*

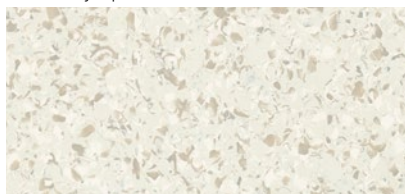
Resilient Flooring

Mipolam Affinity

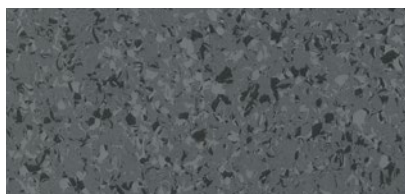
High performance vinyl flooring suitable for heavy duty traffic and rolling loads.



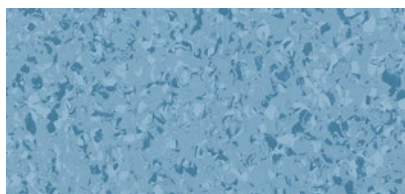
4429 Grey Opal



4401 Quartz



4459 Grey Storm

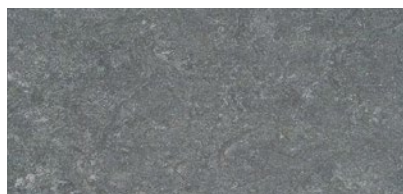


4416 Sapphire

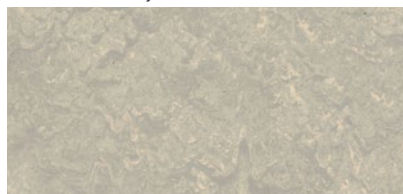
To see the full range - [click here](#)

DLW Marmorette

High performance linoleum flooring suitable for heavy duty traffic for hardworking spaces.



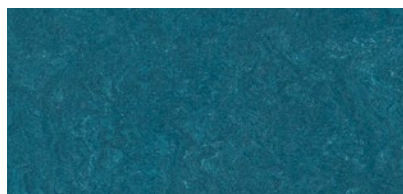
0050 Quartz Grey



0253 Pebble Grey



0132 Lime Green



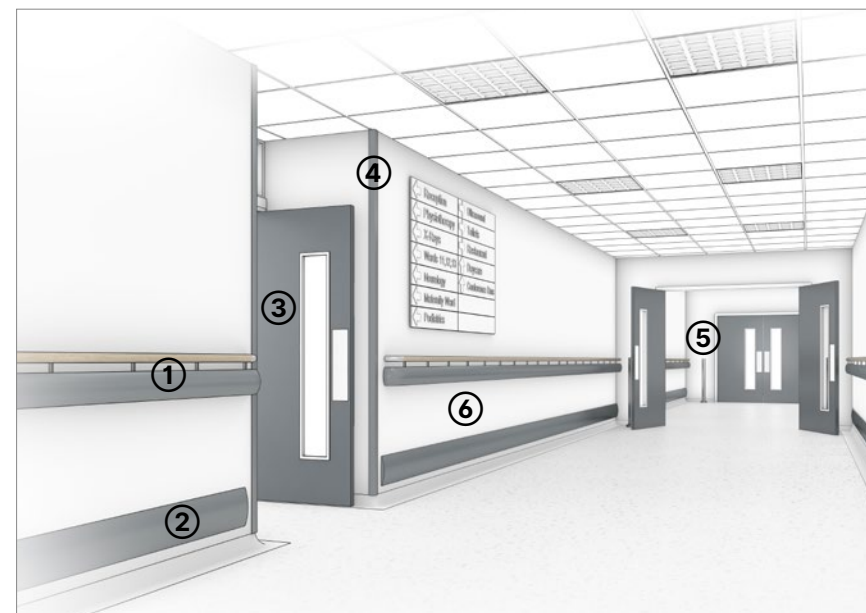
0136 Turquoise Bay

To see the full range - [click here](#)

Wall Protection

Selecting the right product

Corridors and circulation areas are amongst the busiest parts of a building and often have to deal with a heavy flow of both pedestrian and wheeled traffic, which then filters into other parts of the building. This high level of activity often requires a robust protection system in place to protect vulnerable walls and corners from scuffs and scrapes and direct impact damage.



- 1 Dual Rail - [click here](#)
- 2 Wall Guard - [click here](#)
- 3 Door Face Protection - [click here](#)
- 4 High Impact PVC-u Corner Guard - [click here](#)
- 5 Stainless Steel Bollard - [click here](#)
- 6 SureProtect Endure® Wall Cladding - [click here](#)



Restaurants & Cafeterias

Key considerations when selecting Flooring and Wall Protection products for Restaurants & Cafeterias

- ✓ A bright, calm and welcoming environment
- ✓ Products that promote hygiene and infection control
- ✓ Quiet and comfortable underfoot
- ✓ Easy clean and low maintenance products
- ✓ Protect walls from damage caused by mobile equipment

Complementary Products

Gerflor Surface Treatments Vinyl - [click here](#)

Gerflor LVT Skirtings - [click here](#)

Gradus Cove Formers & Caps - [click here](#)

Resilient Flooring

Creation 70 Dryback LVT

Best in class LVT for a warm and contemporary finish for front of house applications, suitable for heavy foot traffic.



0800 Toasted Wood Roadster



1056 Onka Pearl



0358 Moon Island



0797 Cervino Oak Beige

To see the full range - [click here](#)

Tarasafe Impression

A tough, hygienic and durable safety flooring that offers R11 slip resistance, available in wood effect & mineral designs.



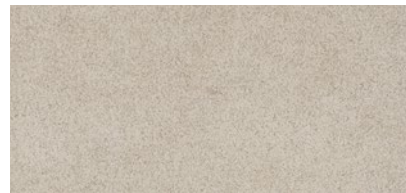
0371 Noma Rustic



0543 Brescia



1069 Habana 3D Trinidad



0523 Genova

To see the full range - [click here](#)

Wall Protection

Selecting the right product

Moveable equipment like catering trolleys, tables and chairs can cause scuffs and scrapes to walls. Consider easy to clean surfaces and corner guards to protect walls and corners.



1 SureProtect Design® Wall Cladding - [click here](#)

1 SureProtect Endure® Wall Cladding - [click here](#)

2 Wall Guards - [click here](#)

3 Corner Guards - [click here](#)

4 Door Face Protection (pushplate) - [click here](#)

5 Door Face Protection (kickplate) - [click here](#)

Key considerations when selecting Flooring and Wall Protection for Kitchens

- ✓ Good slip resistance
- ✓ Resistance to heavy traffic
- ✓ Quiet and comfortable underfoot
- ✓ Easy clean walls and low-cost maintenance
- ✓ Smooth and impervious walls to maintain food hygiene standards

Complementary Products

Gerflor Clean Corner System - [click here](#)

Gerflor Weld Rods - [click here](#)

Gradus Cove Formers & Caps - [click here](#)

Resilient Flooring

Tarasafe Plus

A safety flooring with R10 slip resistance & meets +36 HSE guidelines. Available with a 12 year warranty.



7386 Savana



7767 Dove Grey



7731 Marbre

To see the full range - [click here](#)

Tarasafe Super

A safety flooring with R12 slip resistance & meets +36 HSE guidelines. Available with a 12 year warranty for peace of mind.



7386 Savana



7767 Dove Grey

To see the full range - [click here](#)

Wall Protection

Selecting the right product

Commercial kitchens and food preparation areas require frequent and thorough cleaning to maintain food hygiene standards. Smooth and impervious surfaces are recommended for kitchen walls as an alternative to traditional ceramic tiles and grouting that can harbour bacteria and crack under impact.



- 1 SureProtect Pure® Wall Cladding - [click here](#)
- 2 Stainless Steel Wall Guard - [click here](#)
- 3 Stainless Steel Door Face Protection (pushplate) - [click here](#)
- 4 Stainless Steel Door Face Protection (kickplate) - [click here](#)
- 5 Stainless Steel Corner Guard - [click here](#)
- 6 Stainless Steel Cladding - [click here](#)

Key considerations when selecting Flooring and Wall Protection products for A&E Receptions

- ✓ A bright, calm and welcoming environment
- ✓ Zoning and navigation assistance
- ✓ Resistance to heavy traffic
- ✓ Good slip resistance
- ✓ Easy clean and low maintenance
- ✓ Protect walls from mobile equipment that can cause damage
- ✓ Handrails to offer support and guidance

Complementary Products

Gerflor Clean Corner System - [click here](#)

Gerflor Surface Treatments Vinyl - [click here](#)

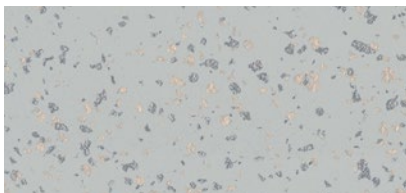
Gerflor PVC Skirtings - [click here](#)

Sit-On Skirting - [click here](#)

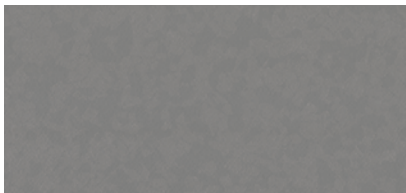
Resilient Flooring

Taralay Premium Compact

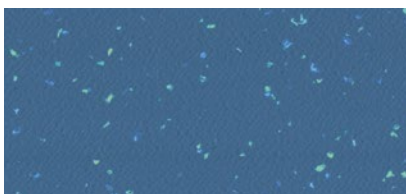
The ultimate flooring solution for rolling load traffic for extremely busy areas.



2750 Ellipse



3791 Slate Grey



4476 Wattaru



8386 Boa Vista

To see the full range - [click here](#)

Taralay Impression Compact

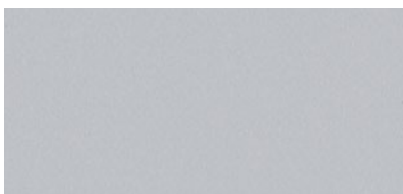
The ideal solution for heavy traffic areas and where indentation resistance is required.



0773 Portobello



0725 Sycamore Light Brown



0832 Grey



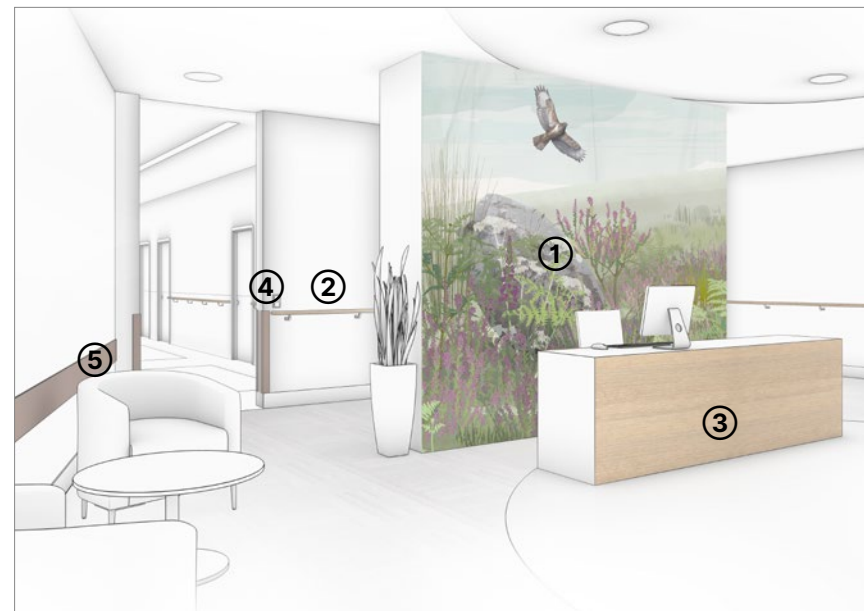
0745 Nest Metal

To see the full range - [click here](#)

Wall Protection

Selecting the right product

Waiting areas are often subject to scuffs and scrapes from chairs and other moveable objects. Corners and edges are also vulnerable from high levels of people and wheeled traffic.



- 1 SureProtect Artworx (print option) - [click here](#)
- 2 Timber Handrail - [click here](#)
- 3 SureProtect Design Wall Cladding (wood effect) - [click here](#)
- 4 Standard PVC-u Corner Guard - [click here](#)
- 5 Wall Strip - [click here](#)



Examination & Consultation Rooms

Key considerations when selecting Flooring and Wall Protection products for Examination and Consultation Rooms

- ✓ A bright, calm and welcoming environment
- ✓ Quiet and comfortable underfoot
- ✓ Good slip resistance
- ✓ Easy clean and low maintenance
- ✓ Protect walls and corners from damage caused by mobile equipment

Complementary Products

Gerflor Clean Corner System - [click here](#)

Gerflor Surface Treatments Vinyl - [click here](#)

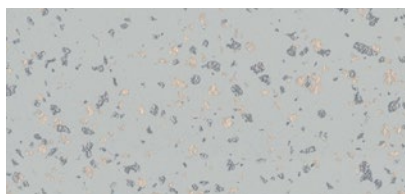
Gerflor Weld Rods - [click here](#)

Gradus Cove Formers & Caps - [click here](#)

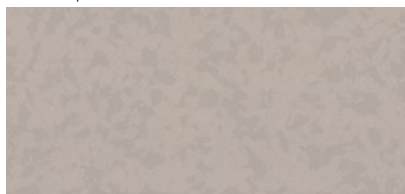
Resilient Flooring

Taralay Premium Comfort

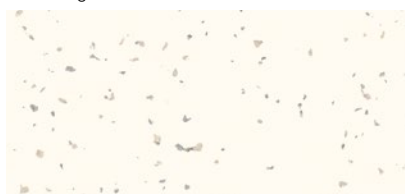
With good acoustic and shock absorption properties and safe underfoot cushioning available in a mix of colours & designs.



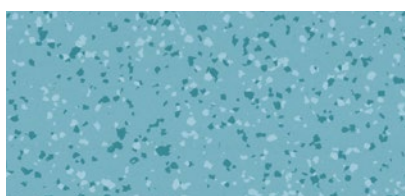
2750 Ellipse



4349 Angora



4001 Ofu

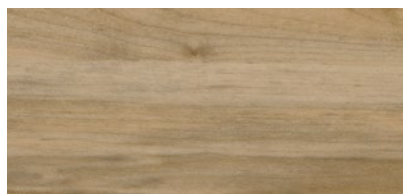


4477 Maceio

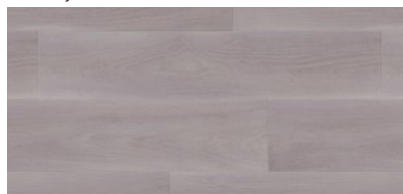
To see the full range - [click here](#)

Taralay Impression Compact

Excellent 19dB sound rating, available in a mix of vibrant colours and wood effect designs. Outstanding indentation resistance and recovery.



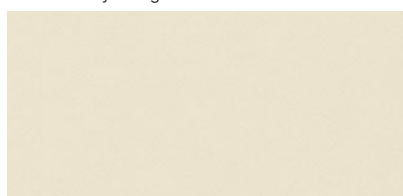
0727 Sycamore Vanilla



0723 Charme Pecan



0680 Infinity Greige



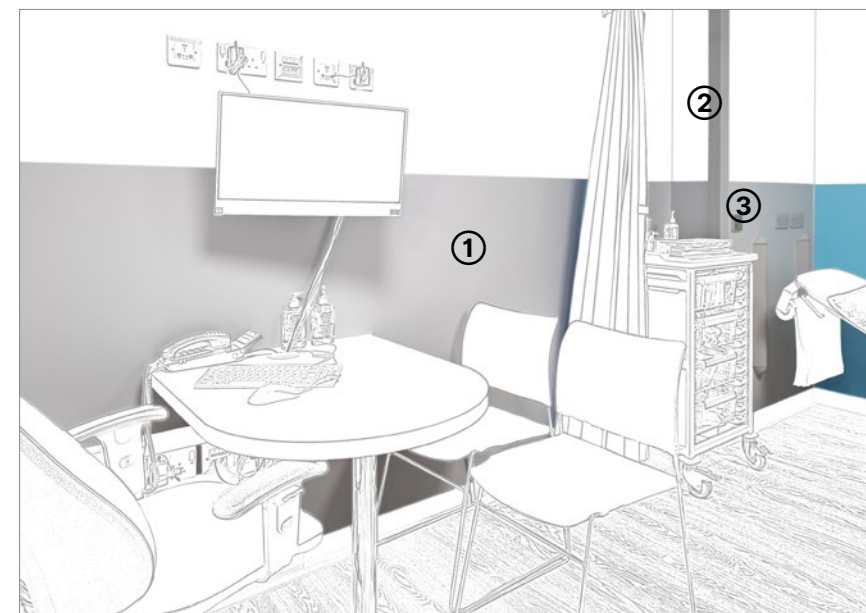
0848 White

To see the full range - [click here](#)

Wall Protection

Selecting the right product

Examination and consulting rooms are subject to high volumes of activity. Hospital staff are regularly tasked with manoeuvring beds, wheelchairs, mobile medical equipment, service trolleys and other wheeled traffic in confined spaces, increasing the likelihood of impact damage to walls.



- 1 SureProtect Endure® Wall Cladding - [click here](#)
- 2 High Impact PVC-u Corner Guard - [click here](#)
- 3 Bed Head Protectors - [click here](#)

Hospital Wards

Key considerations when selecting Flooring and Wall Protection for Hospital Wards

- ✓ Products that promote hygiene and infection control
- ✓ Resistance to stains and chemicals
- ✓ Quiet and comfortable underfoot
- ✓ Good slip resistance
- ✓ Easy clean and low maintenance
- ✓ Handrails to offer support and guidance
- ✓ Protection of vital medical equipment
- ✓ Protection of vulnerable corners from wheeled traffic and mobile beds

Complementary Products

Gerflor Clean Corner System* - [click here](#)

Gerflor Surface Treatments Vinyl - [click here](#)

Gerflor Surface Treatments Linoleum - [click here](#)

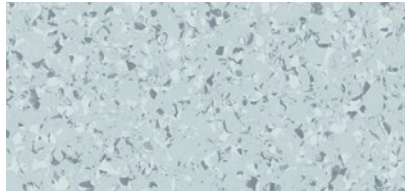
Gradus Cove Formers & Caps - [click here](#)

**Applicable for Mipolam Affinity only*

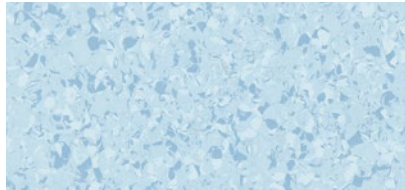
Resilient Flooring

Mipolam Affinity

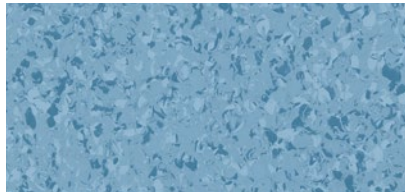
High performance vinyl flooring treated with Evercare™ surface treatment for easy cleaning and maintenance.



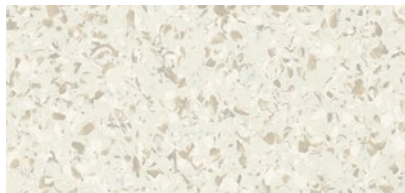
4410 Violet Grey



4496 Light Sapphire



4416 Sapphire



4401 Quartz

To see the full range - [click here](#)

DLW Marmorette

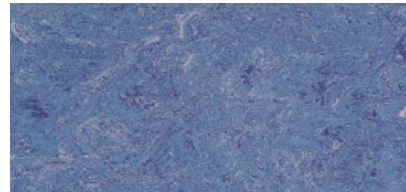
High performance vinyl flooring treated with Neocare™ surface treatment for easy cleaning and maintenance.



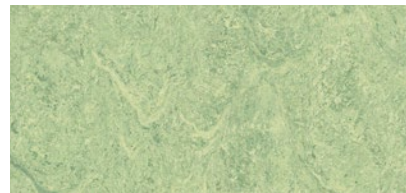
0153 Greystone Grey



0106 Hazelnut Shake



0049 Royal Blue



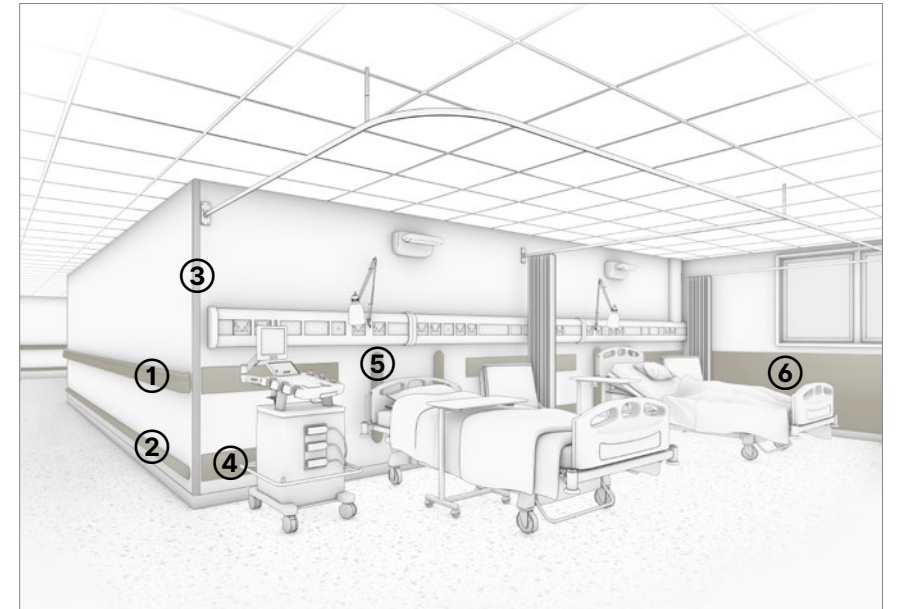
0130 Antique Green

To see the full range - [click here](#)

Wall Protection

Selecting the right product

Ward and hospital accommodation is subject to high volumes of activity. Hospital staff are regularly tasked with manoeuvring beds, wheelchairs, mobile medical equipment, service trolleys and other wheeled traffic in relatively confined spaces, increasing the likelihood of impact damage to walls, corners and doors.



- 1 Combination Rail - [click here](#)
- 2 Wall Guard - [click here](#)
- 3 High Impact PVC-u Corner Guard - [click here](#)
- 4 Wall Strip - [click here](#)
- 5 Bed Head Protectors - [click here](#)
- 6 SureProtect Endure® Wall Cladding (rubrail) - [click here](#)



Outpatient & Treatment Rooms

Key considerations when selecting Flooring and Wall Protection products for Outpatient & Treatment Rooms

- ✓ A bright, calm and welcoming environment
- ✓ Products that promote hygiene and infection control
- ✓ Quiet and comfortable underfoot
- ✓ Easy clean and low maintenance products
- ✓ Protect walls from damage caused by mobile equipment
- ✓ Protection of vital medical equipment

Complementary Products

Gerflor Clean Corner System - [click here](#)

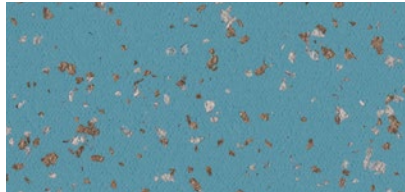
Gerflor Surface Treatments Vinyl - [click here](#)

Gradus Cove Formers & Caps - [click here](#)

Resilient Flooring

Taralay Premium Comfort

High performance flooring with excellent acoustic and shock absorption properties and safe underfoot cushioning.



8627 Allegorie



3791 Slate Grey



4015 Guinea



4342 Juara

To see the full range - [click here](#)

Taralay Impression Comfort

The ideal solution for medium traffic areas where indentation resistance and good acoustics are required.



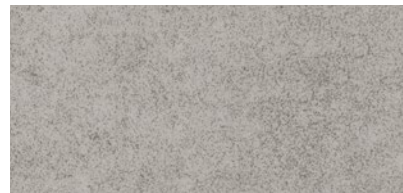
0727 Sycamore Vanilla



0680 Infinity Greige



0770 Clear



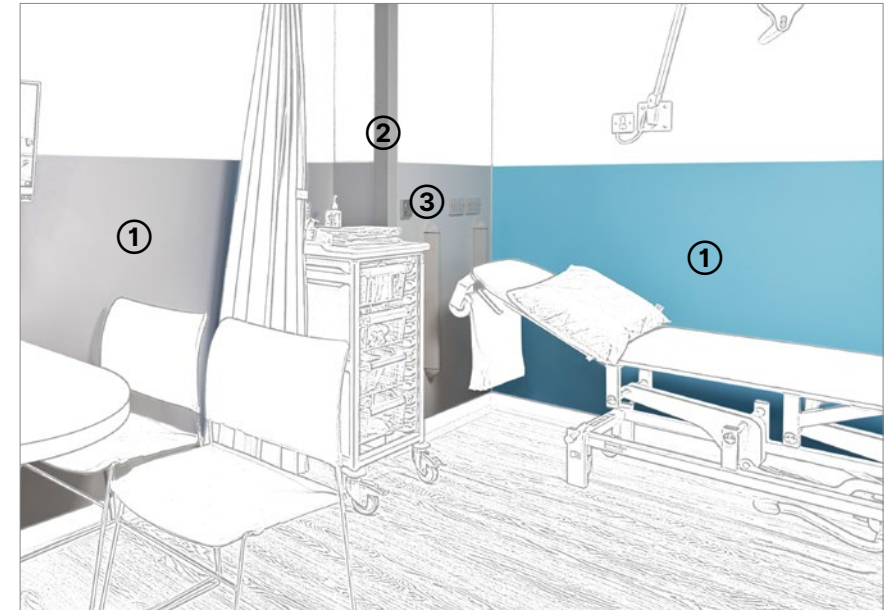
0543 Brescia

To see the full range - [click here](#)

Wall Protection

Selecting the right product

Outpatient and treatment rooms are subject to high volumes of activity. Hospital staff are regularly tasked with manoeuvring beds, wheelchairs, mobile medical equipment, service trolleys and other wheeled traffic in confined spaces, increasing the likelihood of impact damage to walls.



1 SureProtect Endure® Wall Cladding - [click here](#)

2 High Impact PVC-u Corner Guard - [click here](#)

3 Bed Head Protectors - [click here](#)

Imaging Areas

Key considerations when selecting Flooring and Wall Protection products for Imaging Areas

- ✓ A bright, calm and welcoming environment
- ✓ Limits electrostatic charge
- ✓ Quiet and comfortable underfoot
- ✓ Low resistance to rolling loads
- ✓ Impervious surfaces that are smooth and easy to clean
- ✓ Protect walls from damage caused by mobile medical equipment

Complementary Products

Gerflor Clean Corner System - [click here](#)

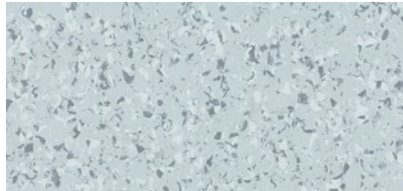
Gerflor Surface Treatments Vinyl - [click here](#)

Gradus Cove Formers & Caps - [click here](#)

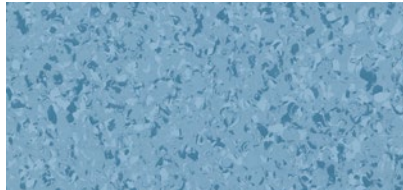
Resilient Flooring

Mipolam EL7

Static-dissipative flooring available in a palette of 10 semi-directional designs coordinated to the Mipolam Affinity range.



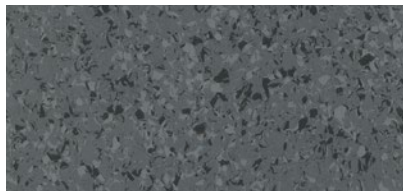
4110 Violet Grey



4116 Sapphire



4132 Citrine

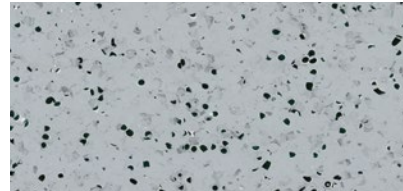


4159 Grey Storm

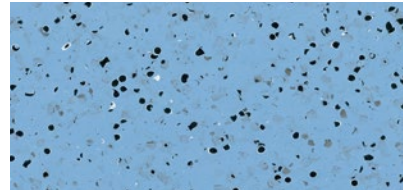
To see the full range - [click here](#)

Mipolam EL5

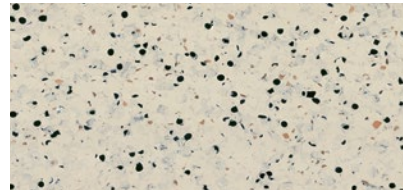
Permanent conductive flooring available in a palette of 6 colours in a non directional design.



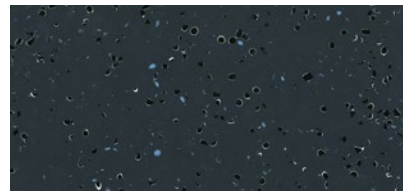
0352 Grey



0354 Blue



0353 Beige



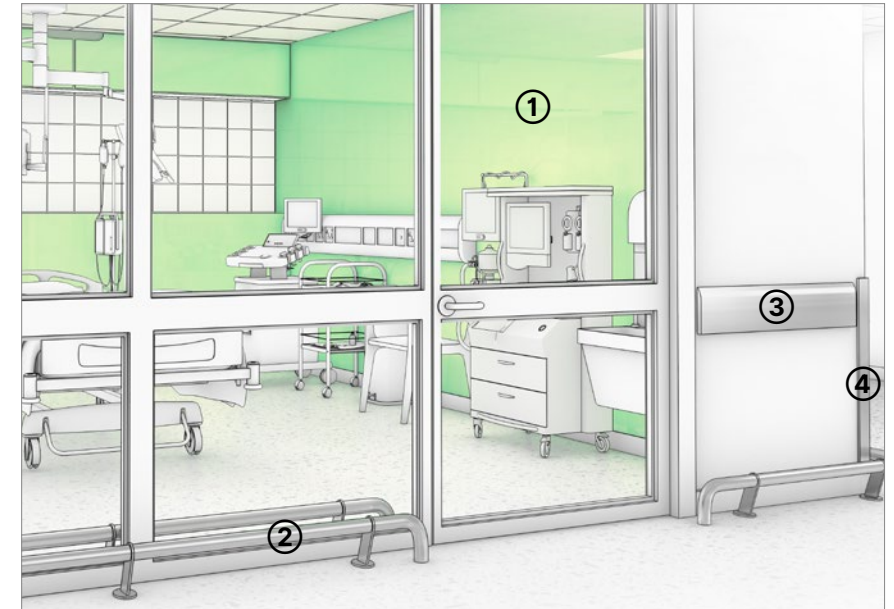
0351 Black

To see the full range - [click here](#)

Wall Protection

Selecting the right product

Mobile equipment is frequently moved around in imaging areas increasing the potential for damage. These areas require impervious surfaces that are smooth and easy to clean with a resistance to impact damage.



1 SureProtect Pure® Wall Cladding - [click here](#)

2 Stainless Steel Floor Rail - [click here](#)

3 Stainless Steel Wall Guard - [click here](#)

4 Stainless Steel Corner Guard - [click here](#)

Operating Theatres & Clinical Areas

Key considerations when selecting
Flooring and Wall Protection for
Operating Theatres & Clinical Areas

- ✓ Hygiene and infection control
- ✓ Easy to clean walls and floors
- ✓ Resistance to stains and cleaning chemicals
- ✓ Flooring to have electrostatic control
- ✓ Walls protected from impact damage

Complementary Products

Gerflor Clean Corner System - [click here](#)

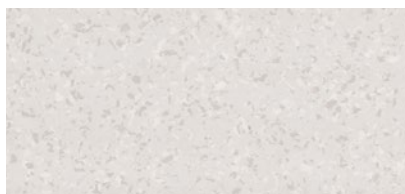
Gerflor Surface Treatments Vinyl - [click here](#)

Gradus Cove Formers & Caps - [click here](#)

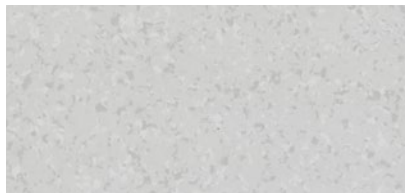
Resilient Flooring

Mipolam Symbioz™

High performance homogeneous flooring treated with Evercare™ for outstanding chemical and stain resistance.



6008 Calico



6009 Grey Stone



6006 Blue Sky

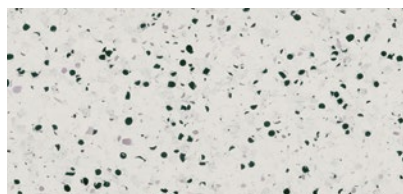


6039 Pebble

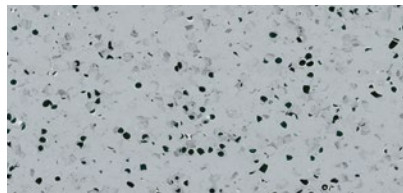
To see the full range - [click here](#)

Mipolam EL5

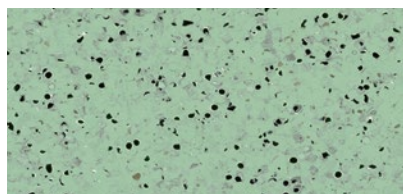
High performance ESD conductive flooring treated with Evercare™ for excellent resistance to stains and chemicals.



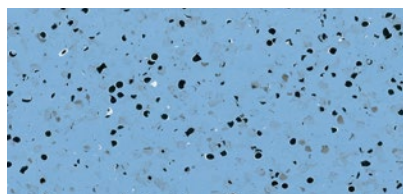
0350 Light Grey



0352 Grey



0355 Green



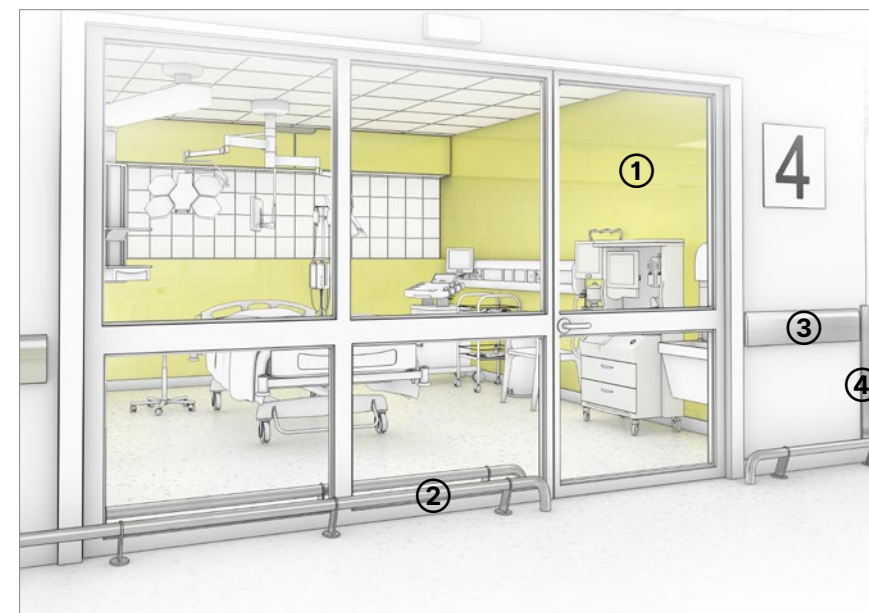
0354 Blue

To see the full range - [click here](#)

Wall Protection

Selecting the right product

Strict hygiene standards in intensive healthcare environments require robust building materials that can withstand intensive cleaning. Consider impervious surfaces that are smooth and easy to clean, with a resistance to impact damage.



1 SureProtect Pure® Wall Cladding - [click here](#)

2 Stainless Steel Floor Rail - [click here](#)

3 Stainless Steel Wall Guard - [click here](#)

4 Stainless Steel Corner Guard - [click here](#)

Physiotherapy Areas

Key considerations when selecting Flooring and Wall Protection products for Physiotherapy Areas

- ✓ A bright, calm and welcoming environment
- ✓ Products that promote hygiene and infection control
- ✓ Quiet and comfortable underfoot
- ✓ Easy clean and low maintenance products
- ✓ Protect walls and corners from damage caused by mobile equipment

Complementary Products

Gerflor Surface Treatments Vinyl - [click here](#)

Gerflor E120 Adhesives - [click here](#)

Gradus Cove Formers & Caps - [click here](#)

Resilient Flooring

Taraflex Performance

A synthetic isports flooring that offers optimal safety, comfort and hygiene. Available in wood effect & vibrant designs.



2404 London Light Blue



6570 Mint Green



6038 Terracotta



6350 Light Cherry

To see the full range - [click here](#)

Taraflex Evolution

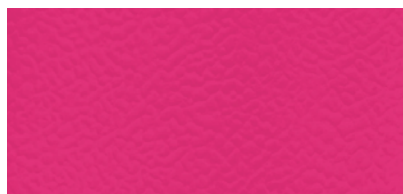
A synthetic isports flooring that offers safety, comfort and hygiene. Available in wood effect & vibrant designs.



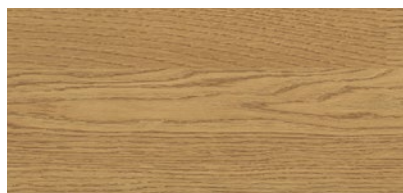
6431 Teal



6211 Gold



6159 Pink



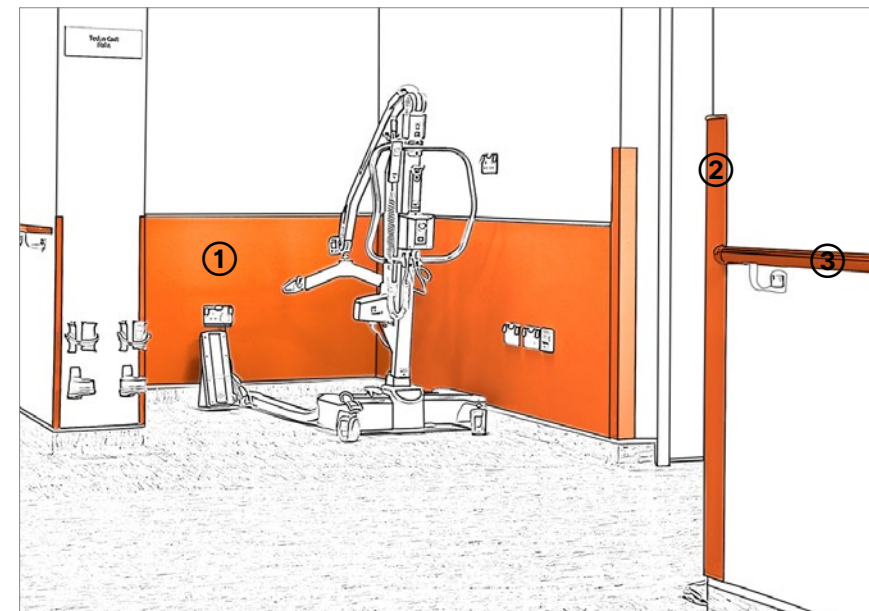
5742 Wood Oak

To see the full range - [click here](#)

Wall Protection

Selecting the right product

Patients are regularly wheeled in and out of physiotherapy areas which risk gouging wall surfaces if a collision were to occur. Wall and corners need to be protected from impact damage.



1 SureProtect Endure® Wall Cladding - [click here](#)

2 Standard Corner Guard - [click here](#)

3 Handrail - [click here](#)

Bathroom & Shower Rooms

Key considerations when selecting Flooring and Wall Protection for Bathroom & Shower Rooms

- ✓ Good slip resistance
- ✓ Watertight floors and walls
- ✓ Resistance to stains and cleaning chemicals
- ✓ Easy clean and low-cost maintenance

Complementary Products

Gerflor Clean Corner System - [click here](#)

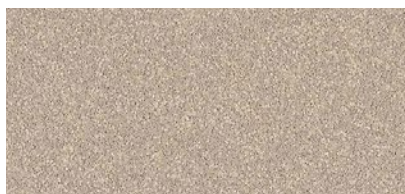
Gerflor Surface Treatments Vinyl - [click here](#)

Gradus Cove Formers & Caps - [click here](#)

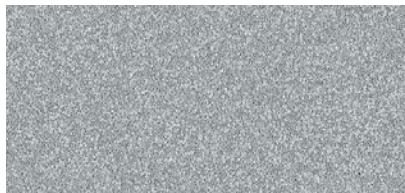
Resilient Flooring

Tarasafe H₂O

A stud-free, high performance, slip resistant safety flooring for wet applications that meets 50+ HSE guidelines.



0031 Eacham



0033 Rhine



0034 Zambezi

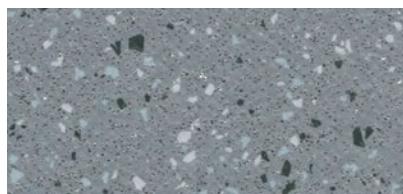


0036 Lagoa

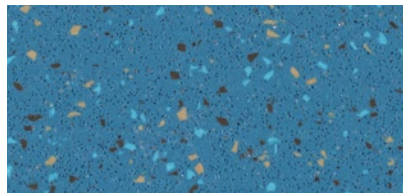
To see the full range - [click here](#)

Tarasafe Ultra

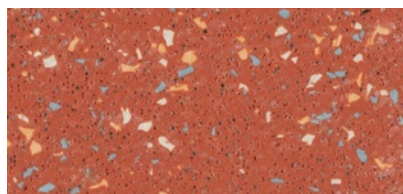
Outstanding safety flooring where slip-resistance, durability and hygienic conditions are required, meets +36 HSE guidelines.



8709 Granite



8420 Azurite



7307 Copper



9127 Meteorite

To see the full range - [click here](#)

Wall Protection

Selecting the right product

Bathrooms and shower rooms are areas where cleanliness is a priority. SureProtect Pure wall protection is smooth and easy to clean and offers an impermeable barrier to moisture and is a hygienic alternative to ceramic tiles, removing the need for grout which can harbour bacteria.



- 1 SureProtect Pure® Wall Cladding - [click here](#)
- 2 SureProtect Endure® Wall Cladding - [click here](#)
- 3 Standard Corner Guard - [click here](#)

Key considerations when selecting
Flooring and Wall Protection for
Laboratories

- ✓ Hygiene and infection control
- ✓ Resistance to stains and chemicals
- ✓ Good slip resistance
- ✓ Quiet and comfortable underfoot
- ✓ Easy clean and low-cost maintenance

Complementary Products

Gerflor Clean Corner System - [click here](#)

Gerflor Surface Treatments Vinyl - [click here](#)

Gradus Cove Formers & Caps - [click here](#)

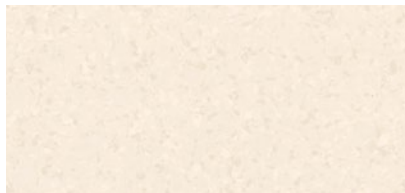
Resilient Flooring

Mipolam Symbioz™

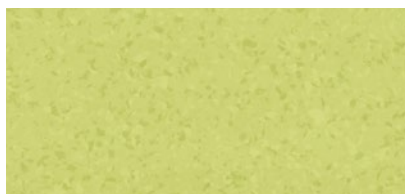
High performance homogeneous flooring treated with Evercare™ for outstanding chemical and stain resistance.



6044 Sea Storm



6001 Cotton



6027 Acacia



6032 Sunshine

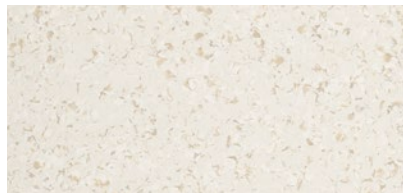
To see the full range - [click here](#)

Mipolam Affinity

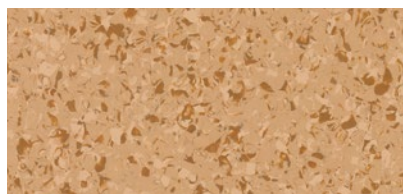
High performance flooring with good abrasion resistance and Evercare™ surface treatment for easy cleaning.



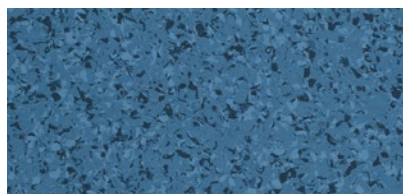
4412 Tundra



4402 Yuki



4425 Amber



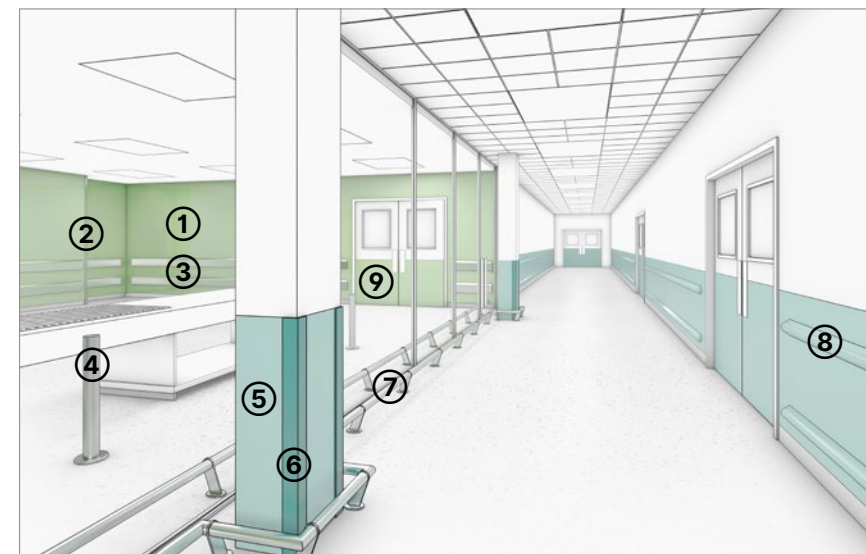
4436 Santorini

To see the full range - [click here](#)

Wall Protection

Selecting the right product

Strict hygiene standards in laboratories require robust building materials that can withstand extensive cleaning. Mobile trolleys are frequently moved around increasing the potential damage to walls and corners.



- 1 SureProtect Pure® Wall Cladding - [click here](#)
- 2 Stainless Steel Corner Guard - [click here](#)
- 3 Stainless Steel Wall Guard - [click here](#)
- 4 Stainless Steel Bollard - [click here](#)
- 5 SureProtect Endure® Wall Cladding - [click here](#)
- 6 PVC-u Corner Guard - [click here](#)
- 7 Stainless Steel Floor Rail - [click here](#)
- 8 PVC-u Wall Guard - [click here](#)
- 9 SureProtect Endure® Door Face Protection - [click here](#)

Pharmacies

Key considerations when selecting Flooring and Wall Protection products for Pharmacies

- ✓ Good slip resistance
- ✓ Quiet and comfortable underfoot
- ✓ Excellent resistance to rolling loads
- ✓ Easy clean and low maintenance
- ✓ Smooth and impervious walls that can withstand extensive cleaning regimes
- ✓ Protect walls from mobile equipment that can cause damage

Complementary Products

Gerflor Clean Corner System* - [click here](#)

Gerflor Surface Treatments Vinyl - [click here](#)

Gradus Cove Formers & Caps - [click here](#)

**Applicable for Mipolam Affinity only*

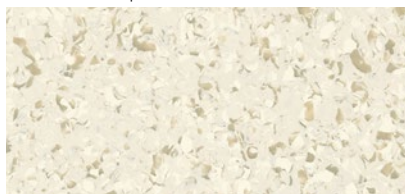
Resilient Flooring

Mipolam Affinity

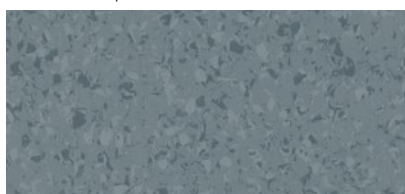
High performance flooring suitable for heavy duty traffic with excellent abrasion and stain resistance. No wax for life.



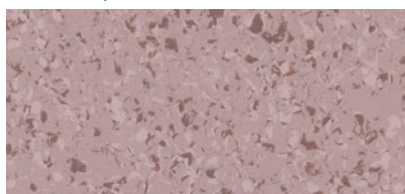
4443 Lime Taupe



4405 Sand Opal



4450 Stormy Weather



4437 Cashmere Rose

To see the full range - [click here](#)

Creation 70 Dryback

Best in class LVT for a warm and contemporary finish for front of house applications, suitable for heavy foot traffic.



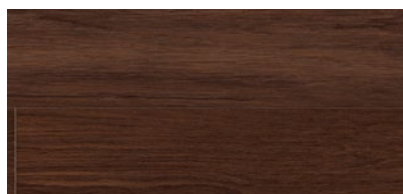
0359 Wild Oak



1191 Clifton Chestnut



1051 Muse Smoked



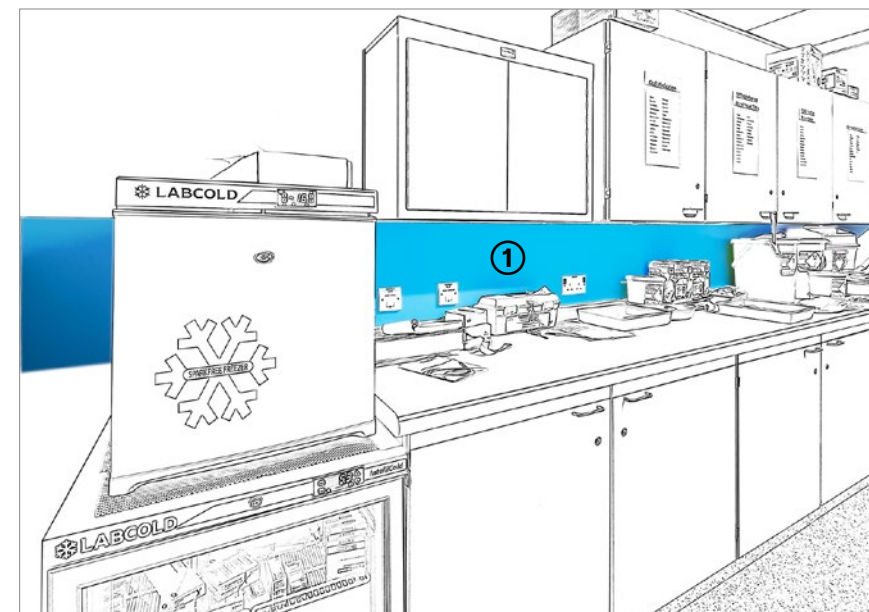
1057 Onka Coffee

To see the full range - [click here](#)

Wall Protection

Selecting the right product

Strict hygiene standards in pharmacies require robust building materials that can withstand extensive cleaning. Mobile trolleys are frequently moved around increasing the potential damage to walls and corners.



1 SureProtect Pure® Wall Cladding - [click here](#)

Standard Corner Guard - [click here](#)

Key considerations when selecting Flooring and Stair Edging products for Healthcare environments

- ✓ Slip Resistance properties – select insert suitable for the environment
- ✓ Cleaning & Maintenance – ability to withstand harsh regimes
- ✓ Colour Contrast – achieve 30 points LRV difference between stair edging & floorcovering
- ✓ Fixing Method – install with Gradus Grip stair edging adhesive for a hygienic solution

Complementary Products

Gerflor Surface Treatments Vinyl - [click here](#)

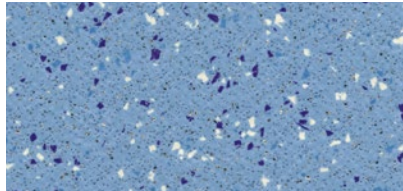
Gradus Stair Trims - [click here](#)

Gradus Grip (GG290) - [click here](#)

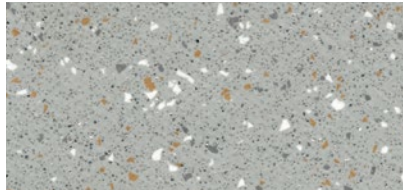
Resilient Flooring

Tarasafe Ultra

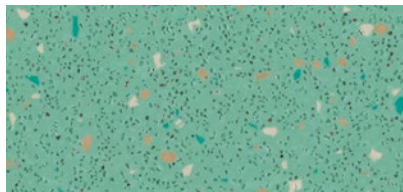
Outstanding safety flooring where slip-resistance, durability and hygienic conditions are required, meets +36 HSE guidelines.



7482 Halite



8704 Pebble



8592 Aventurine

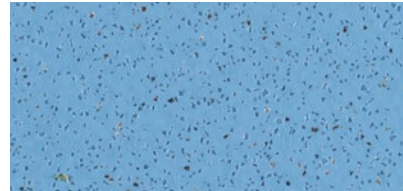


7383 Diopside

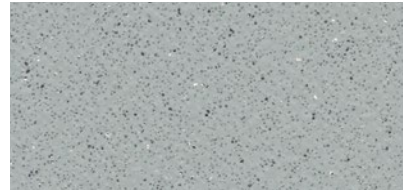
To see the full range - [click here](#)

Tarasafe Standard

Outstanding safety flooring where slip-resistance, durability and hygienic conditions are required, meets +36 HSE guidelines.



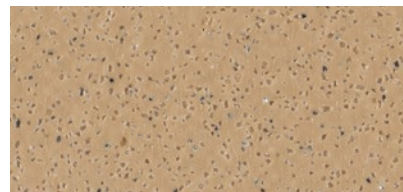
2430 Rain Drop



7767 Dove Grey



7386 Savana



7315 Jute

To see the full range - [click here](#)

Stair Edgings

XT™ Aluminium Stair Edgings

XT aluminium stair edgings offer the ultimate solution in reducing slips, trips and falls on stairs. Ideal for hospital environments where more intensive cleaning is required.



1 XT™ Aluminium Stair Edgings - [click here](#)

- Inserts available in Interior & Xtra-Grip
- Unique locking mechanism offers improved performance
- Slip-resistant insert extends around the leading edge of the profile, reducing the risk of slip, trips or falls occurring)
- Now includes 8 wide channel options



Back of House Storage Areas

Key considerations when selecting Flooring and Wall Protection for Back of House Storage Areas

- ✓ Resistance to heavy rolling loads
- ✓ Resistance to heavy traffic
- ✓ Easy clean and low-cost maintenance
- ✓ Robust wall protection solution to protect the building from damage and improve safety for pedestrians

Complementary Products

Gerflor Surface Treatments Vinyl - [click here](#)

Gradus Cove Formers & Caps - [click here](#)

Resilient Flooring

GTI Max

A fast renovation solution which can be installed over most existing floors where minimal sub floor preparation is required.



0230 Blue



0235 Dark Grey



0253 Aluminium



0262 Libeccio

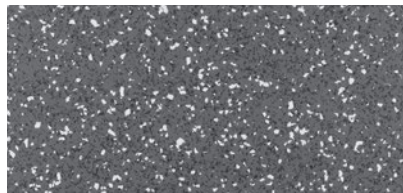
To see the full range - [click here](#)

Attraction®

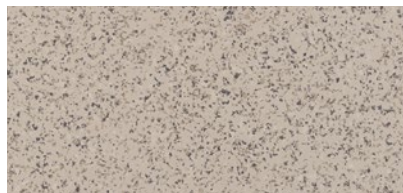
A fast track easy solution with interlocking edges which allows for rapid loose lay installation and replacement.



8736 Recife



2741 Brooklyn



2744 Queens Soft



2743 Central Park

To see the full range - [click here](#)

Wall Protection

Selecting the right product

Wheeled traffic such as industrial bins and carts can cause significant damage when accidental collisions occur. Motorised traffic including delivery vans and motorised trolleys are also potential hazards in service areas.



- 1 Rubber Corner Guard - [click here](#)
- 2 Rubber Wall Guard - [click here](#)
- 3 Handrail System - [click here](#)
- 4 Steel Core Protection Post - [click here](#)
- 5 Aluminium Chequer Plate - [click here](#)

1) An innovative corner system

A total and complete solution for installing corners that aids the control of contamination

Controlling contamination in general healthcare environments as well as ultra clean areas such as burns units, pharmacies and operating theatres is always a challenge. Corners, in particular, are where most of the imperfections are found:

- Their shape makes cleaning and decontamination difficult
- Poorly welded, they can tear or sag under the weight of traffic
- Weakened by use, they end up losing their water-tightness

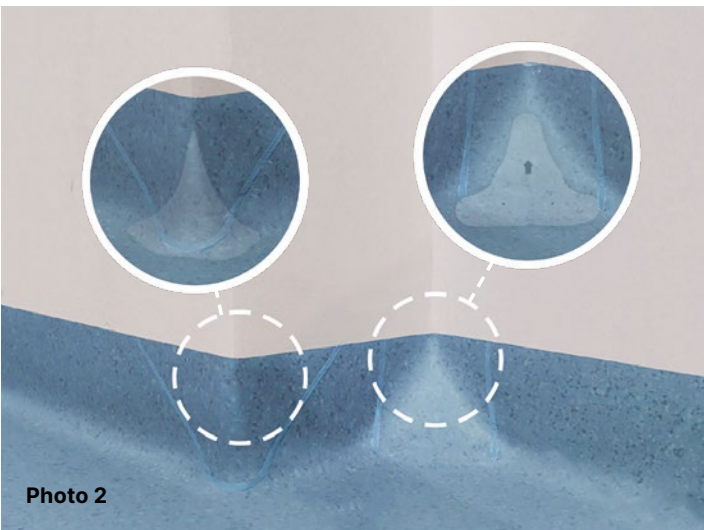
In partnership with cleaning professionals, Gerflor has developed Clean Corner System: a patent pending innovative corner solution. Years of research and development have led to Clean Corner System (Gerflor only validate this system with Gerflor products). Thanks to ultra-resistant and versatile profiles (Photo 1), Clean Corner System is suitable for all your projects, and delivers perfect results (Photo 2).






View our Clean Corner System video - [click here](#)

View the Solution - [click here](#)



Clean Corner System Wins
Innovation & Product Design Award



Watertight	
Resistant & Durable	
Clean	
Versatile	
Attractive	

Innovations for Clinical Healthcare Environments

2) Surface treatments for vinyl

Our surface treatments are perfect for healthcare environments with unrivalled levels of chemical & stain resistance, reducing maintenance time and costs.



Evercare™ is an exclusive surface treatment obtained by UV laser cross-linking. This means no waxing or polishing is needed to maintain a floor's appearance or colour brightness, reducing maintenance costs and lowering the environmental impact.



ProtecSol® is a surface treatment that delivers stain resistance. It has been tested and approved for over 20 years, is easy to maintain and has no metallisation for life, saving on water and detergents.

For additional information on other surface treatments PUR, Sparclean® and PUR+ please contact us for further details.

View our Stain Resistance Tests video - [click here](#)

Staining Tests
Before cleaning



Betadine

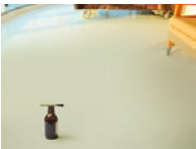


Eosin



Marker

Results After Cleaning
Using a neutral detergent



STAIN 1: Betadine®
Alcoholic Solution



STAIN 2: Eosin



STAIN 3: Permanent Marker®

After 5
Minutes

After 60
Minutes

After 5
Minutes

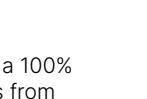
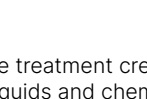
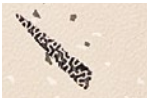
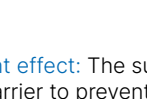
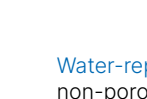
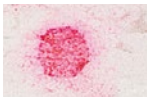
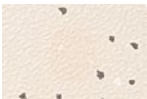
After 60
Minutes

Evercare™
ProtecSol® 2

Other
Homogeneous
Sheets

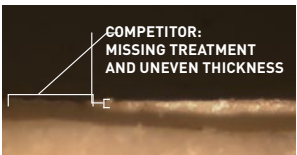
Rubber

VCT



Highly durable: Exclusive surface treatment applied by UV laser cross-linking provides superior durability and an even surface thickness, creating an impenetrable barrier against stains and chemicals. Longer life expectancy.

Water-repellent effect: The surface treatment creates a 100% non-porous barrier to prevent all liquids and chemicals from penetrating the materials, remaining on the surface. Simple and easy stain removal.



3) Surface treatments for linoleum

Our surface treatments are perfect for healthcare environments with unrivalled levels of chemical & stain resistance, reducing maintenance time and costs.



New solvent-free surface protection developed exclusively for DLW Linoleum.

Extremely hard wearing due to triple laser UV cross-linking.



Easy to Clean

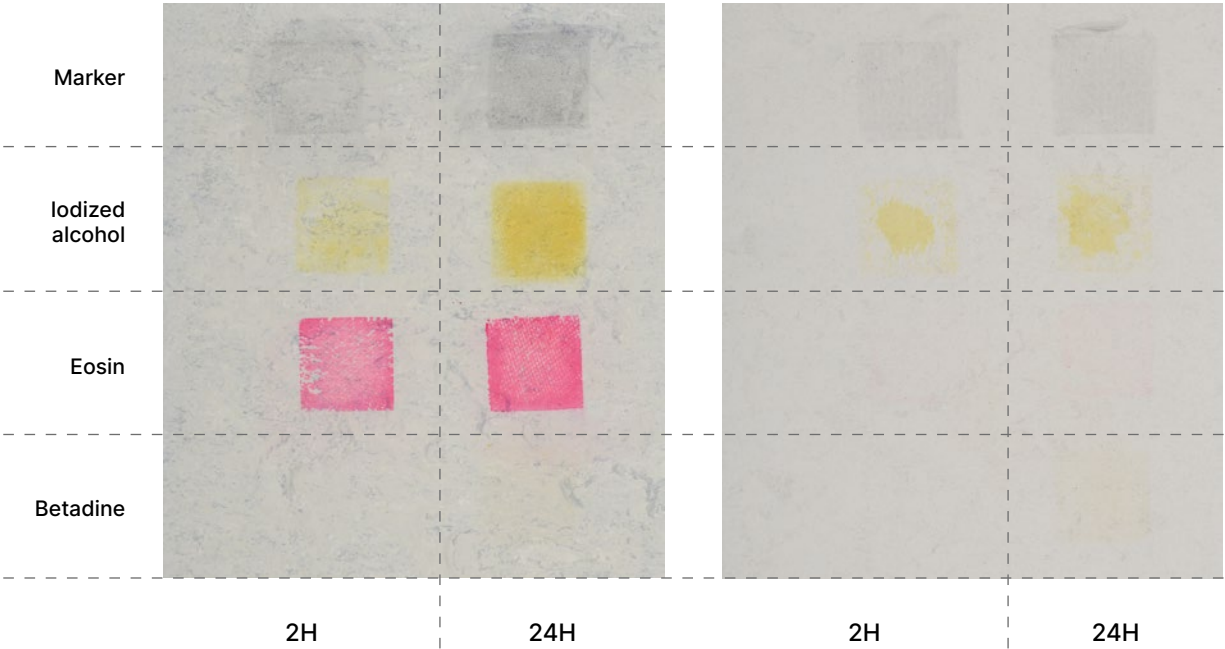
- Dirt and stain barrier
 - Cost effective maintenance
 - Easy cleaning with a mop or any modern cleaning equipment
- Detailed cleaning protocol available on www.gerfor.com



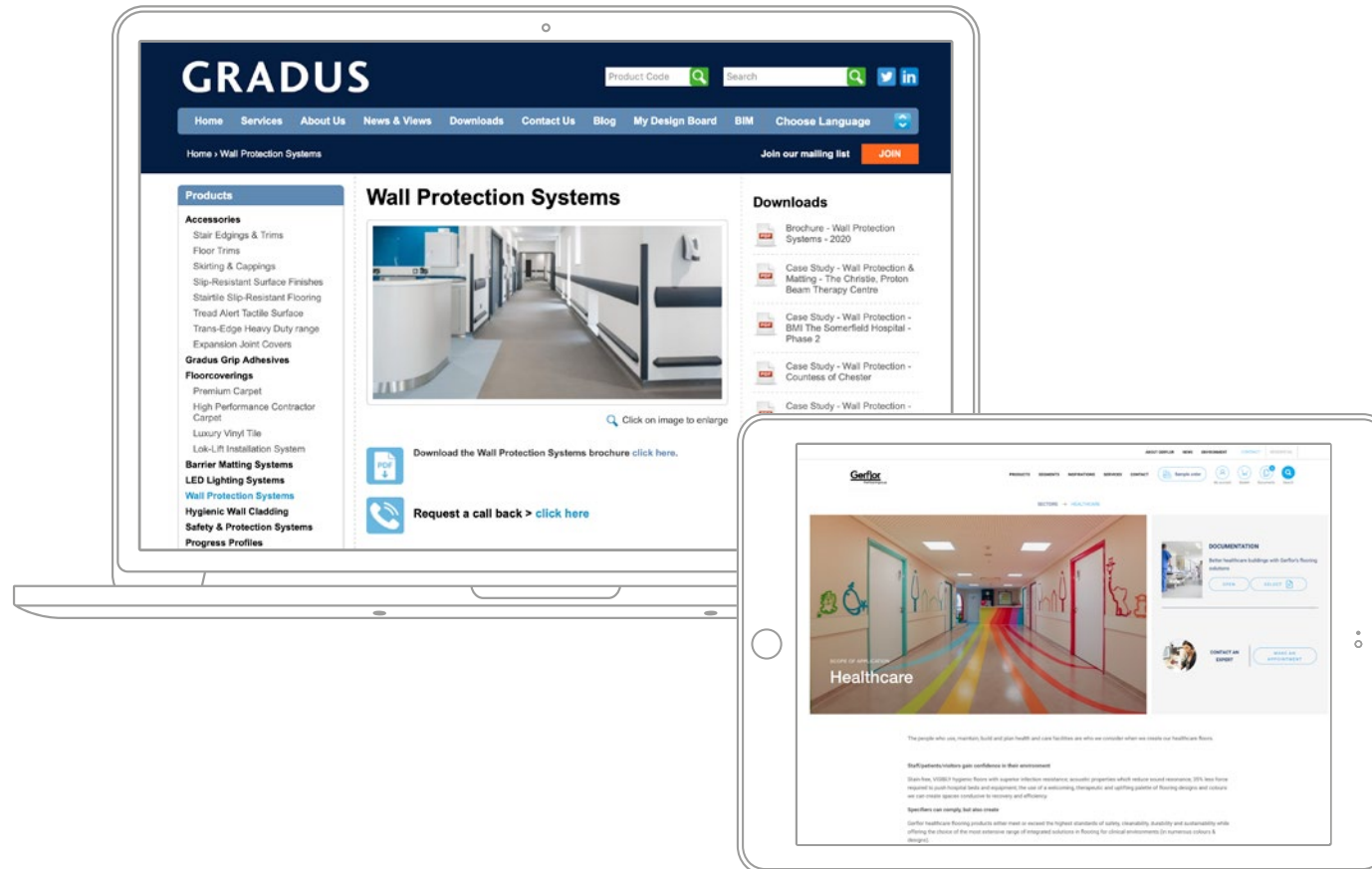
Standard Linoleum



Neocare™



Brochure Downloads



To download our PDF brochures, click on the links below

[Commercial Flooring Solutions Brochure](#)

[Wall Protection Brochure](#)

[Star Edging & Floor Trims Brochure](#)

[Barrier Matting System Brochure](#)

A selection of our Case Studies

A selection of our Case Studies



Head Office:

Park Green, Macclesfield, Cheshire, SK11 7LZ

Gerflor enquiries

Tel: 01625 428922

E-mail: contractuk@gerflor.com

Website: gerflor.co.uk

Gradus enquiries

Tel: 01625 428922

E-mail: imail@gradus.com

Website: gradus.com