

Uniclass			
Pr_35_57_11_62 / 91 / 26			
CI/SfB			
	(43)	Tn6	

Carpet Collection

GRADUS



Contents

Why Gradus	2
Design your space	4
Create a floor scheme	6
Choose the right product	8
Floor plan examples	
<i>Digital Agency</i>	10 - 13
<i>Architects Studio</i>	14 - 17
<i>University Learning Resource Centre</i>	18 - 21
<i>Care Home</i>	22 - 25
Carpet Collection	
Premium Carpet	26
NEW Urban Myth	28 - 31
Streetwise Design	32
SqMile ^{Exec}	34
Cityscene & Brickworks	36
Times Square	38
Emphasis	40
Stratus	42
Stratus Stripe	44
Adventurer	46
NEW Carezone	48
Genus & Volnay	50
High Performance Contractor Carpet	52
NEW Lafite Connect ^{Space}	54
Lafite Connect	56 - 59
NEW Latour ²	60
Predator	62
Bodega	64
Hybrid Barrier Matting	66
NEW Mat-in-a-Box 6000	69
NEW Mat-in-a-Box 5000	70
NEW Mat-in-a-Box 1550	71
Access 6000	73
Access 5000	73
Secondary Barrier Matting	74
Boulevard 7000	76
Boulevard Stripe	78
Boulevard 6000	80
Boulevard 5000	82
Boulevard 1500	84
Lok-Lift	86
Case Studies	88

Why Gradus

Gradus is a UK manufacturer of premium quality carpet tile and plank, broadloom and impervious backed carpets which excel in terms of functionality, aesthetics and ease of maintenance.

Utilising a range of high performance yarns, Gradus' extensive range of carpets are suitable for a wide variety of contract applications including commercial office, healthcare and education environments.



ECONYL® Regenerated Solution Dyed Nylon is produced using nylon waste which is recovered from oceans and from landfill. Waste such as fishing nets, fabric scraps, carpet and industrial plastic is recovered, sorted and cleaned. Through a regeneration and purification process, the nylon waste is recycled back into its original purity.

ECONYL® Regenerated Solution Dyed Nylon is processed into carpet yarn and used to manufacture several of our carpet tile ranges and barrier matting ranges.



FM 10763



EMS 59511



Gradus is a member of the Contract Flooring Association



BRE Global Environmental Profile Scheme



Gradus is a member of NBS Plus



Design your space

Create a floor scheme

Explore the versatility of modular design, zoning and feature areas to create a unique floor scheme.

Choose the right product

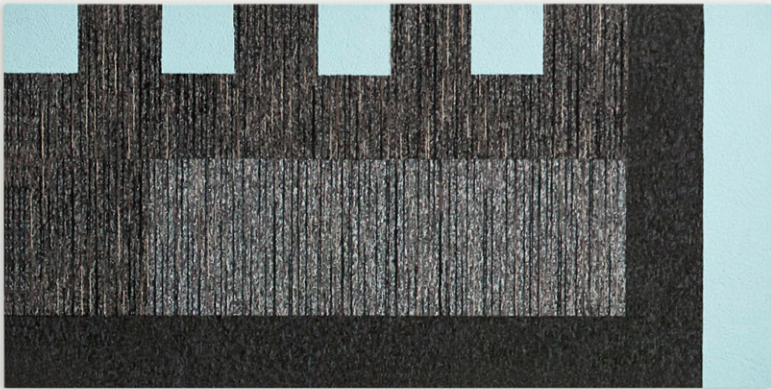
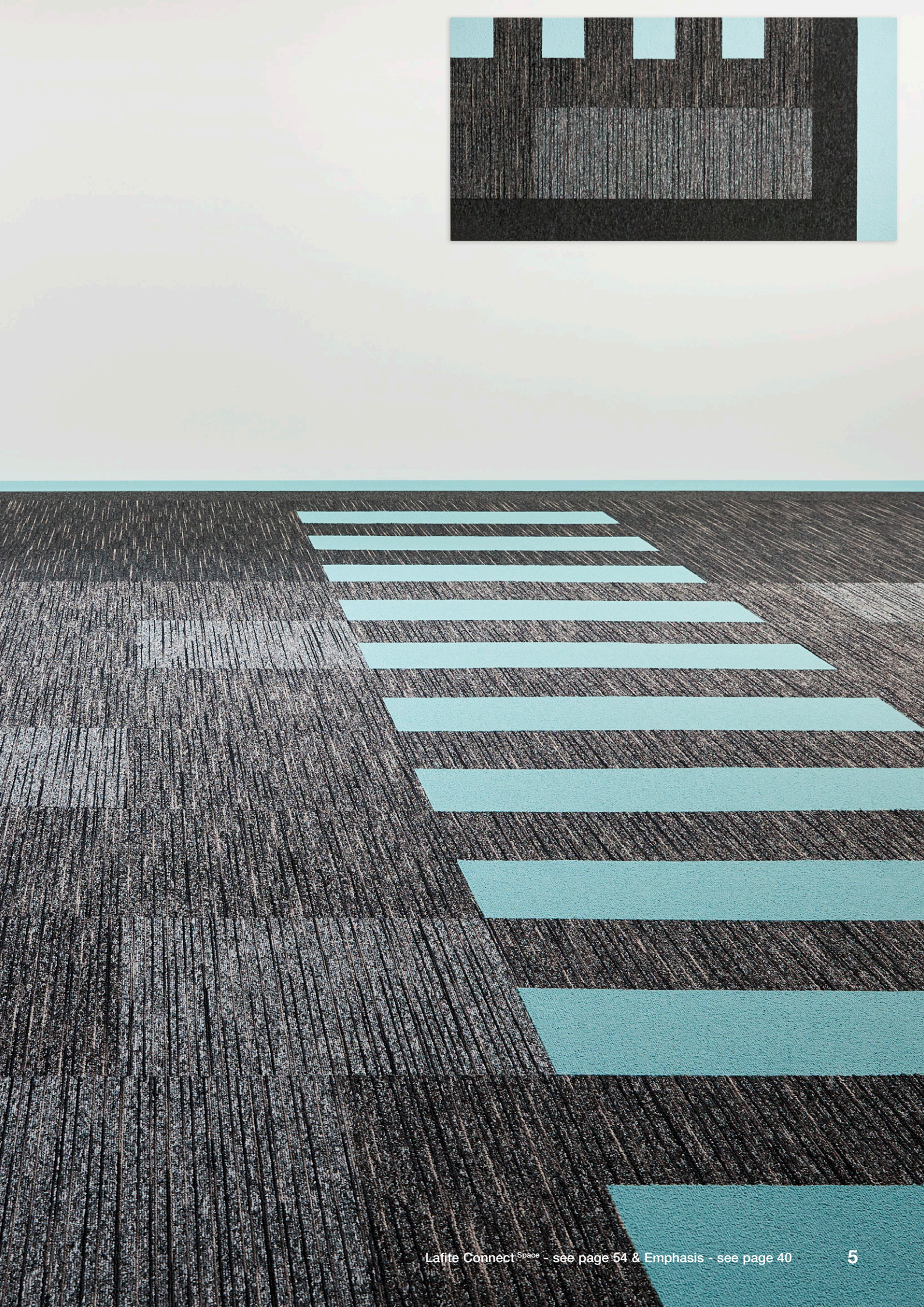
Use the zonal performance chart to choose the right product for the right area.

Floor plan examples

Take inspiration from the floor plan examples to create a coordinated floor scheme.

Carpet Collection

Choose from a wide range of premium and high performance contractor carpets available in tile, plank, broadloom and impervious formats.



Create a floor scheme

Explore the versatility of modular design, zoning and feature areas to create a unique floor scheme.

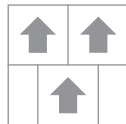
Tile



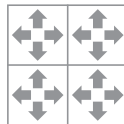
Broadloom



Quarter Turn

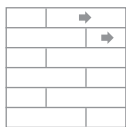


Brick Bond

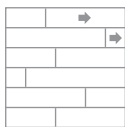


Random

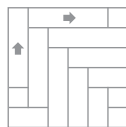
Plank



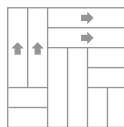
Half Drop



Random Drop



Herringbone



Double Herringbone

Modular Design

Consider the design versatility of both tile and plank. Combine both formats and choose from a range of installation methods to create a unique floor design.



Zoning

Create specific zones by combining colour and design. Use different base tones and different textures to create a gradual transition across the floor from one zone to another.



Feature Areas

Combine colour contrast and use bright accent colours and bold installation methods to create a feature area or an exciting design statement.



Choose the right product

Use the zonal performance chart to choose the right product for the right area.

	Format				Construction		Area of Application										
	Tile	Plank	Broadloom	Impervious	Cut Pile	Loop Pile	Commercial Office	Commercial Office Circulation	Commercial Office Reception	Education Accommodation	Education Circulation	Education Classroom	Education Office	Healthcare Bedroom	Healthcare Circulation	Healthcare Lounge	Healthcare Office
Premium Carpet																	
Urban Myth pages 28 - 31	•	•				•	•	•	•	•	•	•	•		•		•
Streetwise Design page 32	•					•	•	•	•	•	•	•	•		•		•
SqMile ^{Exec} page 34	•				•		•	•	•	•	•	•	•		•		•
Cityscene & Brickworks page 36	•					•	•	•	•	•	•	•	•		•		•
Times Square page 38	•					•	•	•	•	•	•	•	•		•		•
Emphasis page 40	•				•	•	•	•	•		•	•	•		•		•
Stratus page 42	•					•	•	•	•	•	•	•	•		•		•
Stratus Stripe page 44	•					•	•	•	•	•	•	•	•		•		•
Adventurer page 46	•			•		•	•	•	•		•	•	•	•	•	•	•
Carezone page 48				•	•	•				•				•	• ¹	•	
Genus & Volnay page 50	•		•	•	•		•	•	•	•	•	•	•	•	•	•	•
High Performance Contractor Carpet																	
Lafite Connect ^{Space} page 54	•	•				•	•	•	•	•	•	•	•		•		•
Lafite Connect pages 56 - 59	•					•	•	•	•	•	•	•	•		•		•
Latour ² page 60	•					•	•	•	•	•	•	•	•		•		•
Predator page 62	•					•	•	•	•	•	•	•	•				•
Bodega page 64	•		•	•		•	•	•		•	•	•	•	•	•	•	•

¹ Carezone Textured Loop

Floor plan examples

Take inspiration from the floor plan examples to create a coordinated floor scheme.

Digital Agency

Lafite Connect with Emphasis

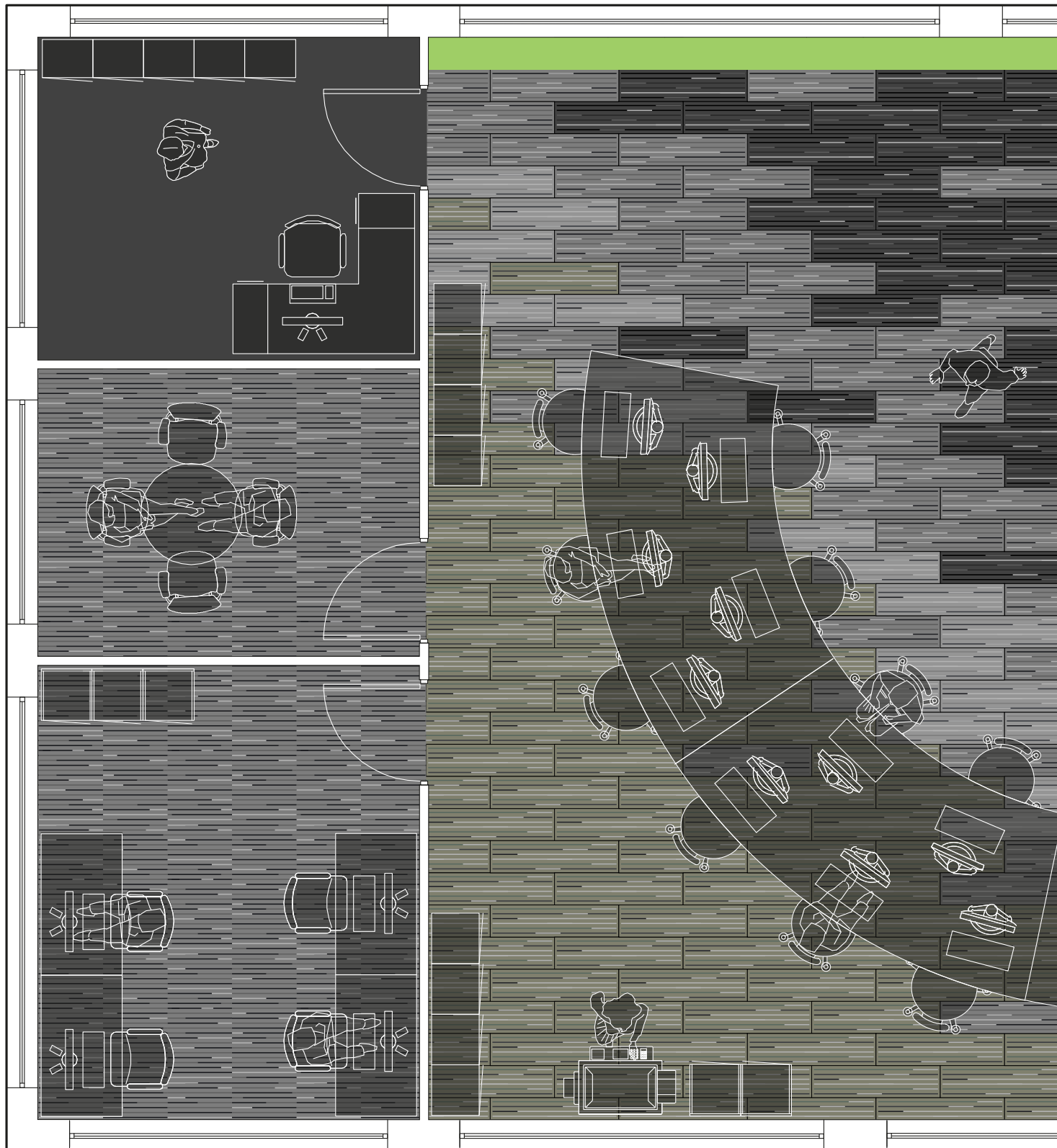




See pages 12-13 for floor plan and colourways

Digital Agency - Floor Plan

Lafite Connect with Emphasis



Lafite Connect Space
LCSPACE33



Lafite Connect Space
LCSPACE28



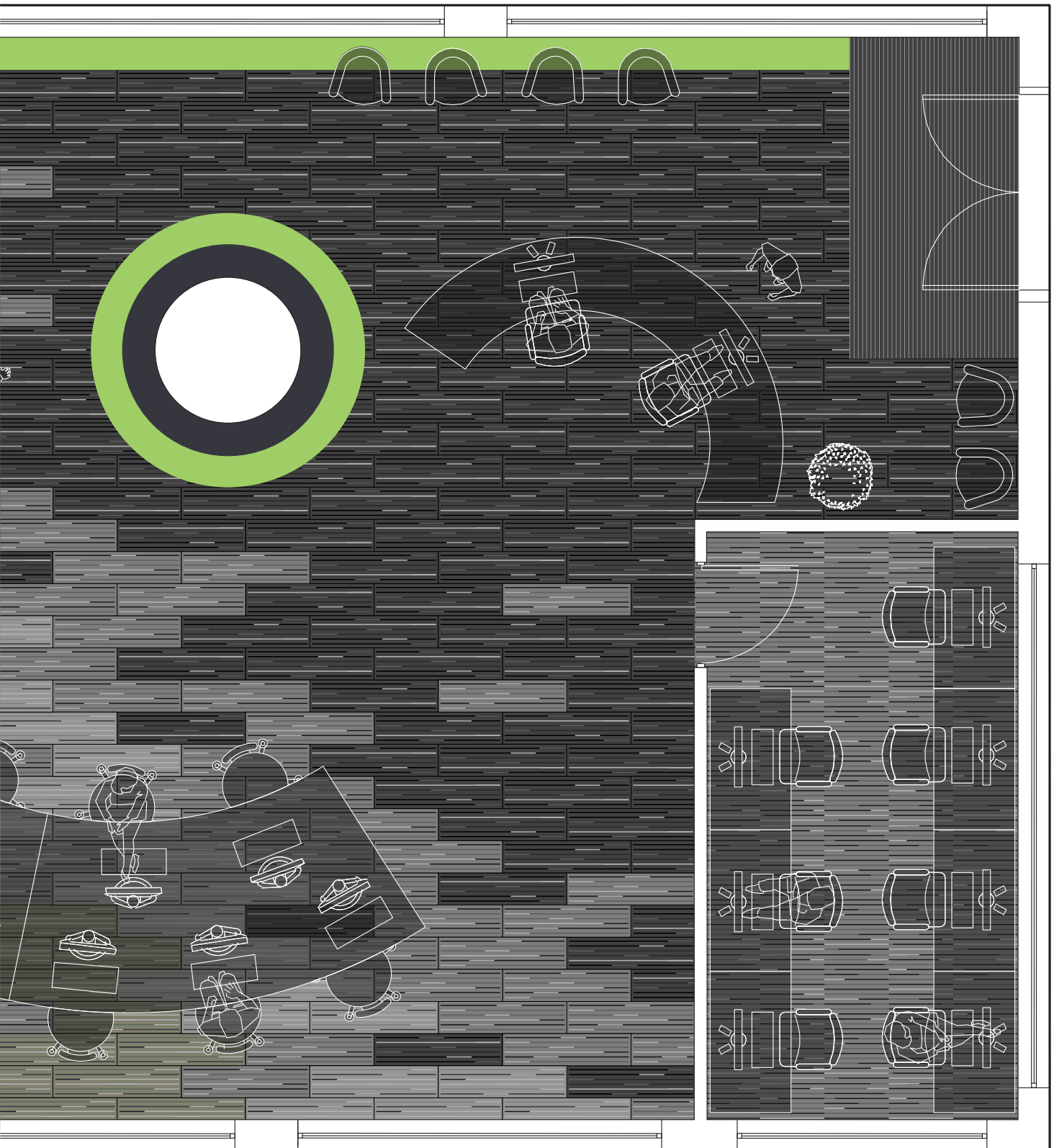
Lafite Connect Space
LCSPACE30



Lafite Connect Space
LCSPACE31

Combine different base tones to create a gradual transition across the floor from one zone to another.

Use tile and plank in different areas and choose complementary colours to create a coordinated design scheme.



Lafite Connect Space
LCSPACE30



Lafite Connect
LC12



Emphasis
Green Loop Pile 104



Mat-in-a-Box 6000
Nickel

Architects Studio

Urban Myth





See pages 16-17 for floor plan and colourways

Architects Studio - Floor Plan

Urban Myth



Urban Myth
Sapphire 07310



Urban Myth
Carbon 07306



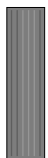
Urban Myth
Graphite 07305



Urban Myth
Lead 07304

Combine colour contrast and bright accent colours to create a feature area.

Use different installation methods and combine both tile and plank to create a unique floor scheme.



Urban Myth
Steel 07303



Urban Myth
Pewter 07302



Urban Myth
Graphite 07305

University Learning Resource Centre

Streetwise Design with Emphasis





See pages 20-21 for floor plan and colourways

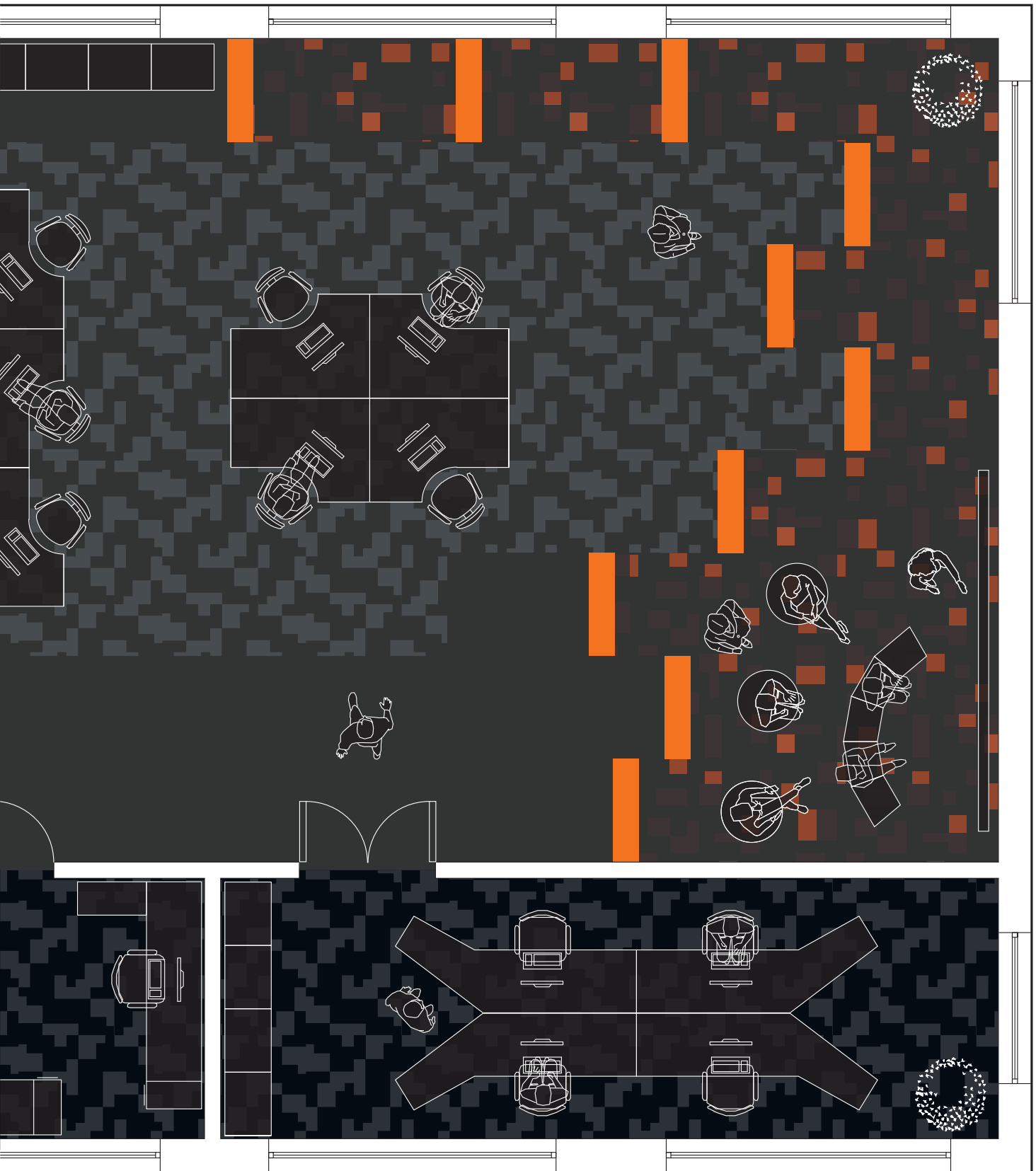
University Learning Resource Centre - Floor Plan

Streetwise Design with Emphasis



Use bright accent colours to create feature areas or an exciting design statement.

Create specific zones such as walkways and breakout areas by using different designs, base tones and textures.



Streetwise Design
Orange 07201



Streetwise Design
Iron 773



Streetwise Design
Coal 778



Stratus
Jet Stream 06506



Emphasis
Orange Loop Pile 102

Care Home

Carezone

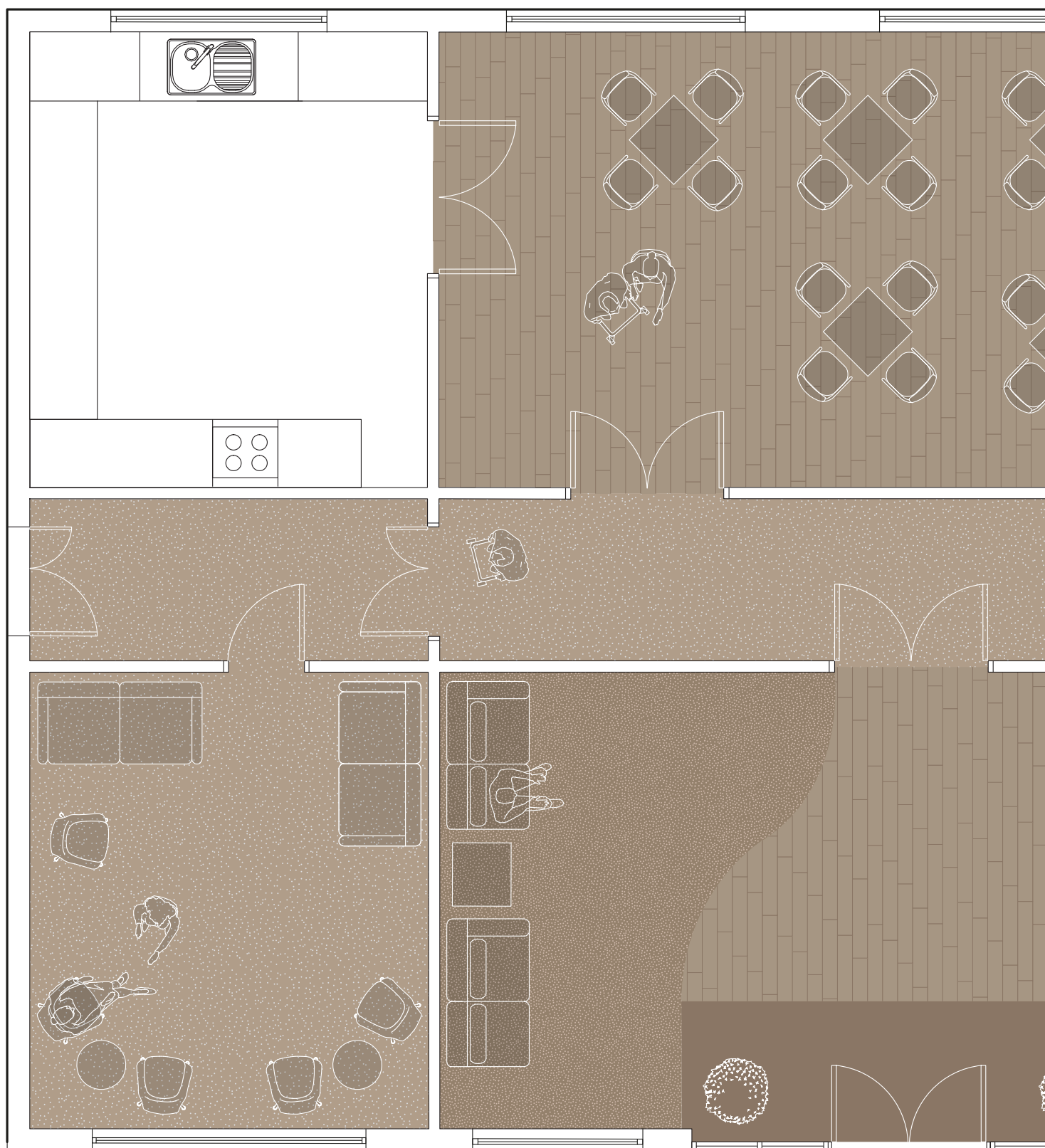




See pages 24-25 for floor plan and colourways

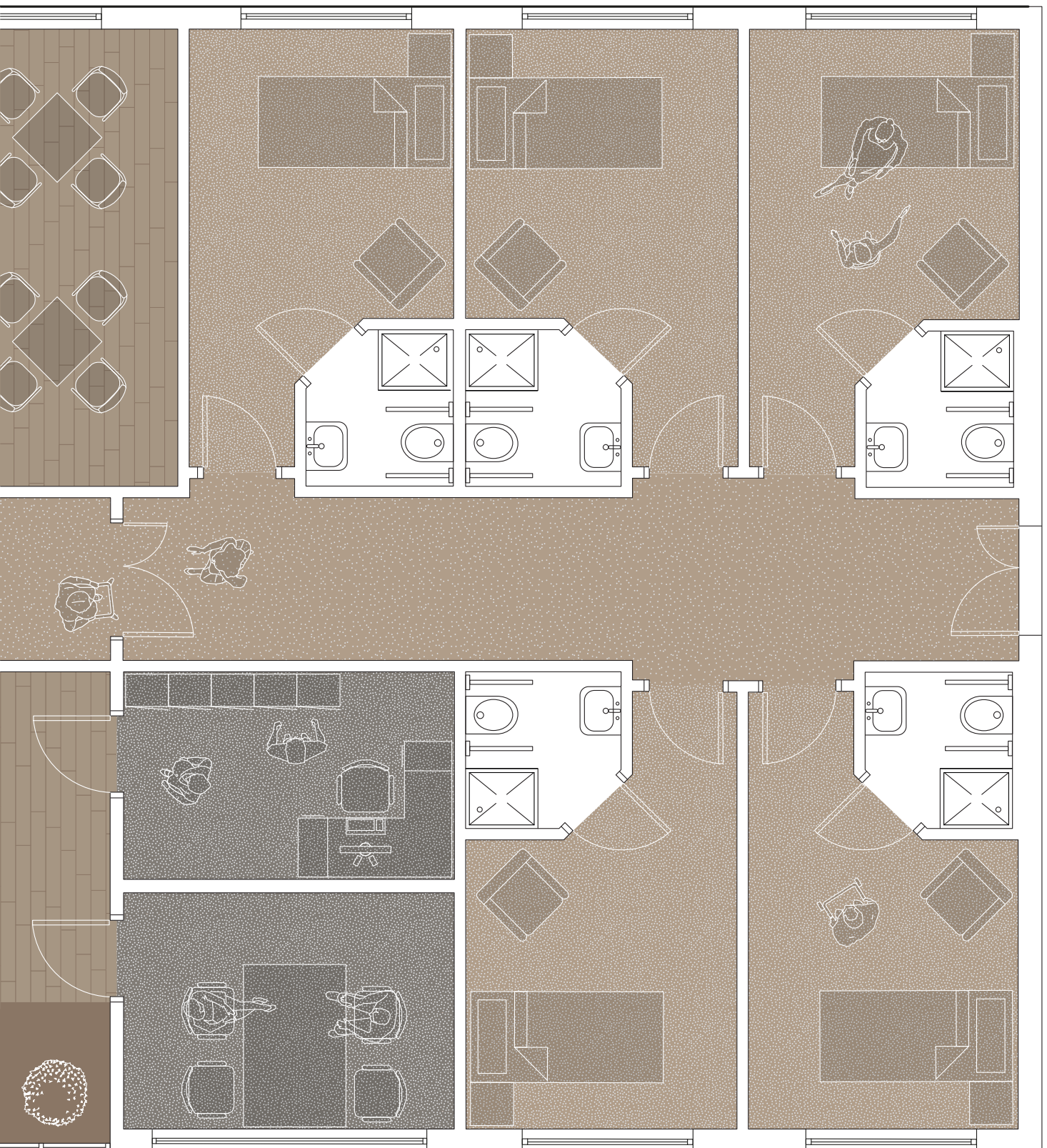
Care Home - Floor Plan

Carezone



Combine natural colours of similar tonal contrast on the floor to create an inclusive environment which is easy to navigate.

Create a comfortable and safe environment which supports the needs of the individual and promotes independent living.



Carezone
Natural Truffle
Cut Pile 07103



Carezone
Soft Taupe
Cut Pile 07102



Carezone
Soft Taupe
Textured Loop 07116



Stratus
Arctic Mist 06512



Boulevard 5000
Corncrake



Safety Flooring (sheet)
e.g. Taralay Impression Control
Esterel Chocolate 0518

Premium Carpet

- Premium design and quality to suit the performance requirements of any area be it a commercial office, education or healthcare application
- Complementary yarn systems and colour bank provide coordinated design schemes

Product range

NEW	Urban Myth	28 - 31
	Streetwise Design	32
	SqMile ^{Exec}	34
	Cityscene & Brickworks	36
	Times Square	38
	Emphasis	40
	Stratus	42
	Stratus Stripe	44
	Adventurer.....	46
NEW	Carezone	48
	Genus & Volnay	50

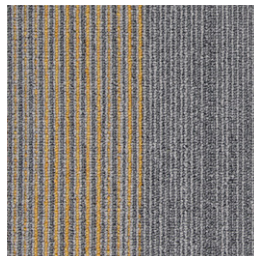


NEW

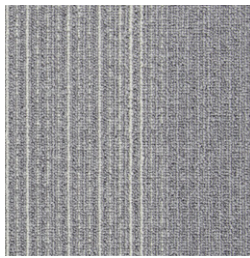
Urban Myth Tile



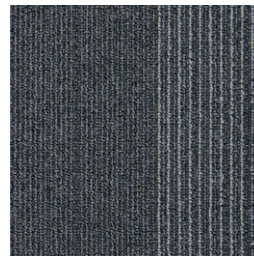
Urban Myth - Amber 07308, Citrine 07307, Pewter 07302, Steel 07303, Lead 07304 and Graphite 07305



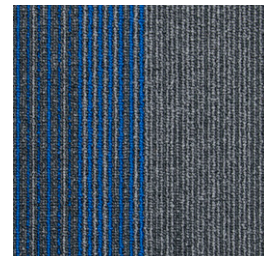
Citrine 07307
LRV 14.26



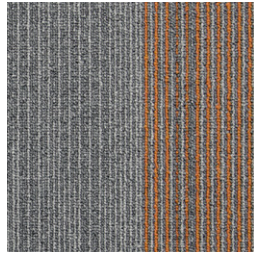
Quartz 07301
LRV 20.78



Lead 07304
LRV 6.02



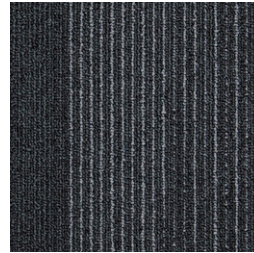
Sapphire 07310
LRV 6.13



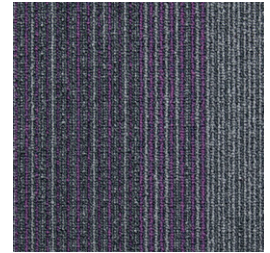
Amber 07308
LRV 12.98



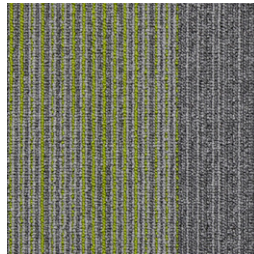
Pewter 07302
LRV 11.74



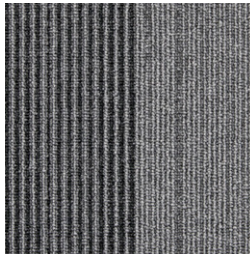
Graphite 07305
LRV 5.98



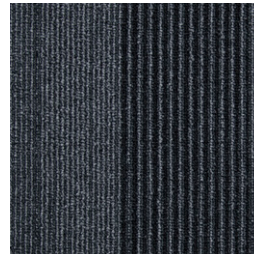
Amethyst 07311
LRV 6.49



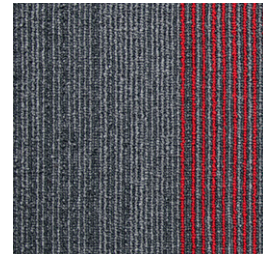
Peridot 07309
LRV 13.44



Steel 07303
LRV 11.29



Carbon 07306
LRV 2.43



Ruby 07312
LRV 6.99

Samples

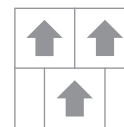
An accurate colour match can only be achieved by requesting the relevant product sample(s) from Gradus Technical Support on 01625 428922.



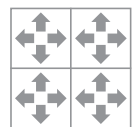
Specification:	Tile
Product Dimensions	500mm x 500mm
Product Construction	Tufted Loop Pile
Surface Yarn	100% Antron® Lumena™ Solution Dyed Nylon 6.6
Total Carpet Weight	4110 g/m ²
Tufted Pile Weight	650 g/m ²
Primary Backing	Non-woven
Secondary Backing	Bitumen
Total Carpet Thickness	6mm
For full specification information visit www.gradus.com	



Quarter Turn



Brick Bond



Random



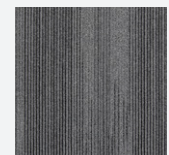
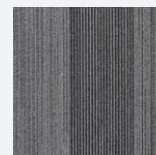
Environmental Profiles
Cert No. ENP 534

BRE Global (BREEAM):

Urban Myth achieves either A+ or A across all BREEAM defined building applications against which it has been assessed.

For specific ratings visit: www.greenbooklive.com

Urban Myth carpet tiles feature a selection of random designs (examples shown below)

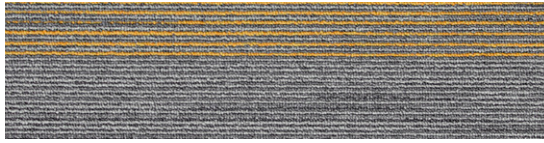


NEW

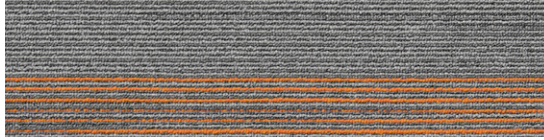
Urban Myth Plank



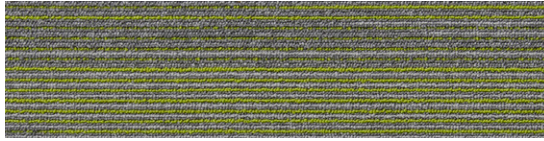
Urban Myth - Sapphire 07310, Carbon 07306, Graphite 07305, Lead 07304, Steel 07303 and Pewter 07302



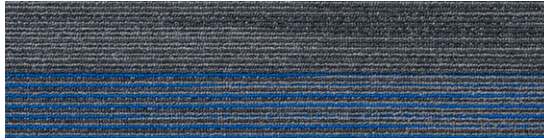
Citrine 07307
LRV 14.26



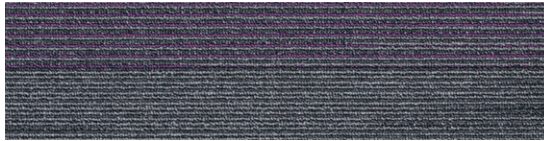
Amber 07308
LRV 12.98



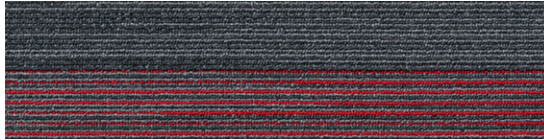
Peridot 07309
LRV 13.44



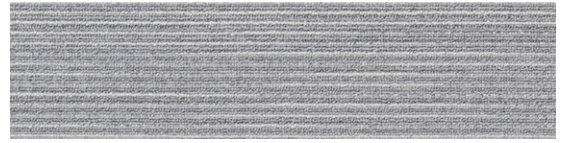
Sapphire 07310
LRV 6.13



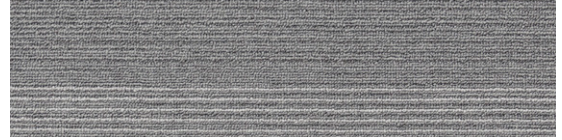
Amethyst 07311
LRV 6.49



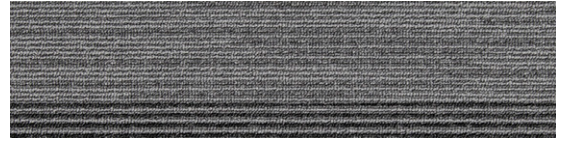
Ruby 07312
LRV 6.99



Quartz 07301
LRV 20.78



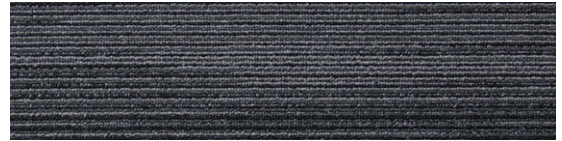
Pewter 07302
LRV 11.74



Steel 07303
LRV 11.29



Lead 07304
LRV 6.02



Graphite 07305
LRV 5.98



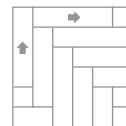
Carbon 07306
LRV 2.43

Samples

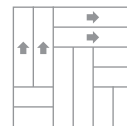
An accurate colour match can only be achieved by requesting the relevant product sample(s) from Gradus Technical Support on 01625 428922.



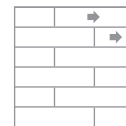
Specification:	Plank
Product Dimensions	250mm x 1000mm
Product Construction	Tufted Loop Pile
Surface Yarn	100% Antron® Lumena™ Solution Dyed Nylon 6.6
Total Carpet Weight	4110 g/m ²
Tufted Pile Weight	650 g/m ²
Primary Backing	Non-woven
Secondary Backing	Bitumen
Total Carpet Thickness	6mm
For full specification information visit www.gradus.com	



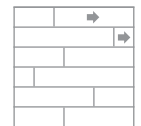
Herringbone



Double
Herringbone



Half Drop



Random Drop

Urban Myth carpet planks feature a selection of random designs



Environmental Profiles
Cert No. ENP 534

BRE Global (BREEAM):

Urban Myth achieves either A+ or A across all BREEAM defined building applications against which it has been assessed.
For specific ratings visit: www.greenbooklive.com

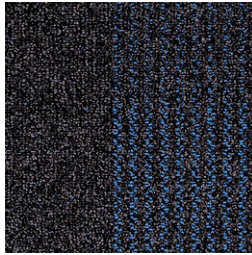
Streetwise Design



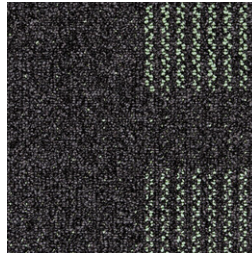
Streetwise Design - Brights Blue 07204 and Originals Iron 773 with Emphasis - Blue 106

Emphasis is ideal for accents and features to create interest, page 40

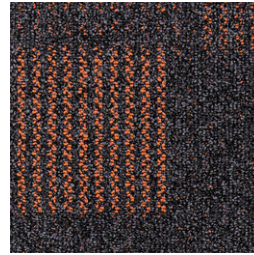
Brights



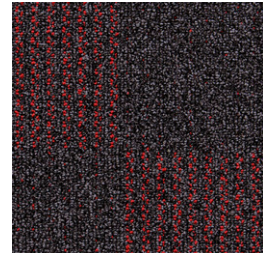
Blue 07204
LRV 4.33



Green 07203
LRV 5.95



Orange 07201
LRV 4.08

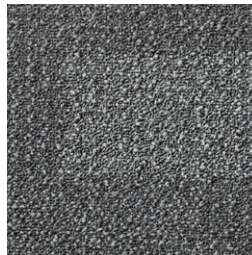


Red 07202
LRV 4.08

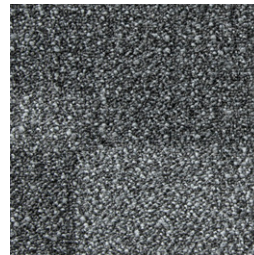
Originals



Slate 754
LRV 8.12



Flint 772
LRV 7.08



Iron 773
LRV 5.34



Coal 778
LRV 1.95



Clay 790
LRV 14.42

Samples

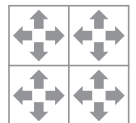
An accurate colour match can only be achieved by requesting the relevant product sample(s) from Gradus Technical Support on 01625 428922.



Specification:	Tile
Product Dimensions	500mm x 500mm
Product Construction	Tufted Loop Pile
Surface Yarn	100% Solution Dyed Nylon
Total Carpet Weight	4500 g/m ²
Tufted Pile Weight	650 g/m ²
Primary Backing	Non-woven
Secondary Backing	Bitumen
Total Carpet Thickness	7mm
For full specification information visit www.gradus.com	



Environmental Profiles
Cert No. ENP 399



Random

BRE Global (BREEAM):

Streetwise Design achieves either A+ or A across all BREEAM defined building applications against which it has been assessed.
For specific ratings visit: www.greenbooklive.com

Streetwise Design carpet tiles feature a selection of random designs (examples shown below)



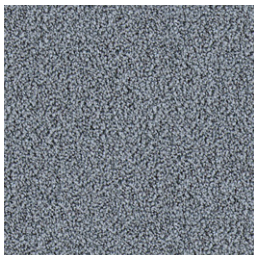


SqMile Exec - Stripes Central Line 01355 and Plains Westminster 01315

Plains



Bank 01313
LRV 9.02



Euston 01314
LRV 9.12

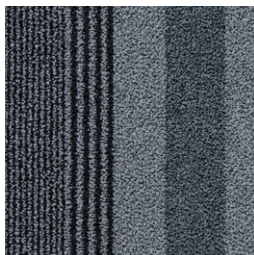


Westminster 01315
LRV 5.61



Farringdon 01310
LRV 1.80

Stripes



Central Line 01355



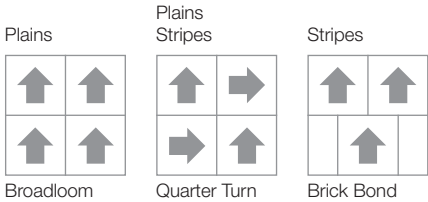
District Line 01366

Samples

An accurate colour match can only be achieved by requesting the relevant product sample(s) from Gradus Technical Support on 01625 428922.



Specification:	Tile
Product Dimensions	500mm x 500mm
Product Construction	Tufted Cut Pile
Surface Yarn	ECONYL® Regenerated SDN
Total Carpet Weight	5147 g/m²
Tufted Pile Weight	1100 g/m²
Primary Backing	Non-woven
Secondary Backing	Bitumen
Total Carpet Thickness	8.7mm
For full specification information visit www.gradus.com	



Cityscene & Brickworks



Cityscene - Caramel 06102 and Brickworks - Himley 06709 and Ironstone 06707

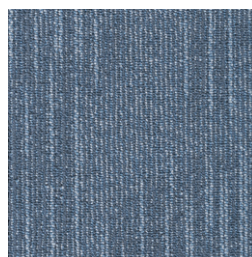
Cityscene



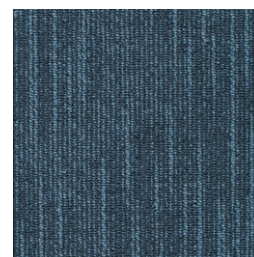
Tin 06103
LRV 16.93



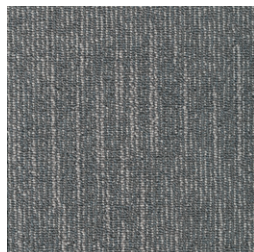
Caramel 06102
LRV 14.94



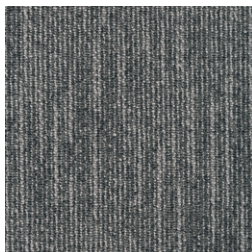
Ice 06105
LRV 11.73



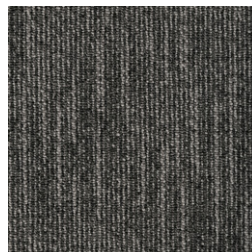
Ocean 06108
LRV 6.26



Shale 06106
LRV 11.22



Granite 06109
LRV 10.83



Basalt 06110
LRV 7.49

Brickworks



Ironstone 06707
LRV 10.02



Brunswick 06708
LRV 8.12



Tonbridge 06711
LRV 4.98



Himley 06709
LRV 3.68

Samples

An accurate colour match can only be achieved by requesting the relevant product sample(s) from Gradus Technical Support on 01625 428922.



Specification:	Cityscene Tile	Brickworks Tile
Product Dimensions	500mm x 500mm	500mm x 500mm
Product Construction	Tufted Loop Pile	Tufted Textured Pattern Loop Pile
Surface Yarn	100% Antron® Lumena™ Solution Dyed Nylon 6.6	100% Antron® Lumena™ Solution Dyed Nylon 6.6
Total Carpet Weight	4490 g/m ²	4290 g/m ²
Tufted Pile Weight	650 g/m ²	800 g/m ²
Primary Backing	Non-woven	Non-woven
Secondary Backing	Bitumen	Bitumen
Total Carpet Thickness	6mm	6.5mm

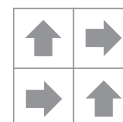
For full specification information visit www.gradus.com

Cityscene

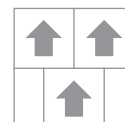


Broadloom

Cityscene & Brickworks



Quarter Turn



Brick Bond



Environmental Profiles
Cert No. ENP 433 & 442

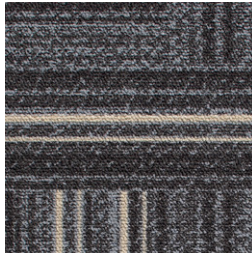
BRE Global (BREEAM):

Cityscene & Brickworks achieve either A+ or A across all BREEAM defined building applications against which they have been assessed. For specific ratings visit: www.greenbooklive.com

Times Square



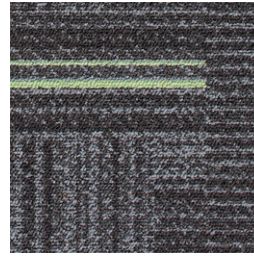
Times Square - Natural 06602



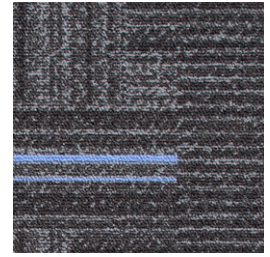
Natural 06602
LRV 6.59



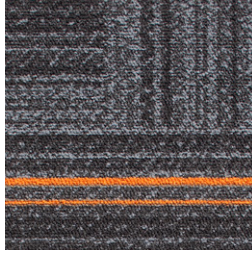
Yellow 06603
LRV 6.77



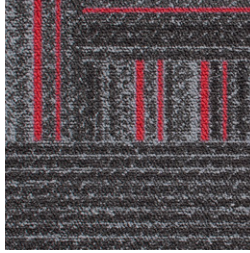
Lime 06606
LRV 4.23



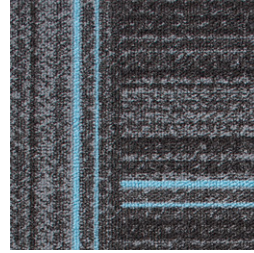
Lilac 06607
LRV 4.38



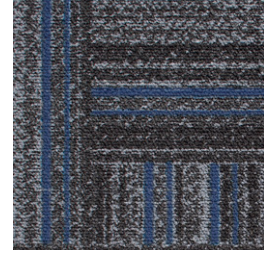
Orange 06604
LRV 6.95



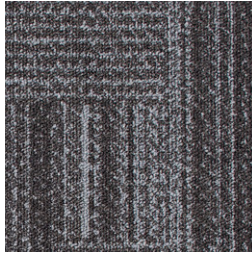
Red 06605
LRV 4.41



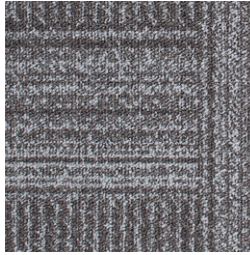
Light Blue 06608
LRV 6.52



Dark Blue 06611
LRV 3.93



Grey 06601
LRV 4.64



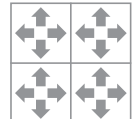
Light Grey 07700
LRV 9.81

Samples

An accurate colour match can only be achieved by requesting the relevant product sample(s) from Gradus Technical Support on 01625 428922.



Specification:	Tile
Product Dimensions	500mm x 500mm
Product Construction	Tufted Loop Pile
Surface Yarn	100% Nylon Type 6
Total Carpet Weight	3700 g/m ²
Tufted Pile Weight	450 g/m ²
Primary Backing	Non-woven
Secondary Backing	90% Recycled Content Polyurethane Cushion
Total Carpet Thickness	8.5mm
For full specification information visit www.gradus.com	



Random



BRE Global (BREEAM):

Times Square achieves either A+ or A across all BREEAM defined building applications against which it has been assessed.
For specific ratings visit: www.greenbooklive.com

Times Square features 6 unique designs in each colourway.



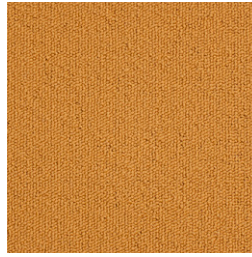
Emphasis



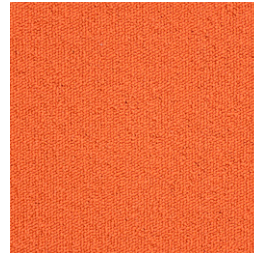
Emphasis - Green 104 with Cityscene - Shale 06106 and Brickworks - Tonbridge 06711



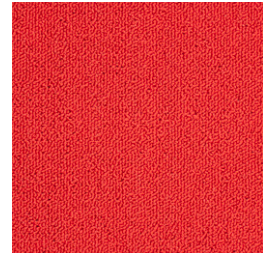
Green
Loop Pile 104 LRV 18.50
Cut Pile 444 LRV 18.10



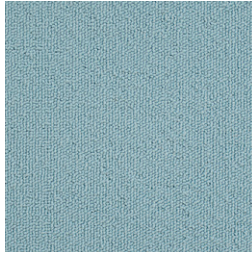
Gold
Loop Pile 101 LRV 25.24
Cut Pile 777 LRV 24.85



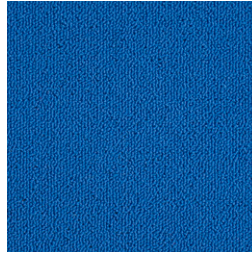
Orange
Loop Pile 102 LRV 16.36
Cut Pile 666 LRV 15.31



Red
Loop Pile 103 LRV 7.75
Cut Pile 555 LRV 7.38



Sky
Loop Pile 105 LRV 24.46
Cut Pile 333 LRV 24.77



Blue
Loop Pile 106 LRV 4.93
Cut Pile 222 LRV 4.56

Emphasis should only be used as an accent colour to complement other product ranges. Emphasis should not be used as a field colour or in areas of heavy traffic such as doorway thresholds.

Samples

An accurate colour match can only be achieved by requesting the relevant product sample(s) from Gradus Technical Support on 01625 428922.



Specification:	Loop Tile	Cut Tile
Product Dimensions	500mm x 500mm	500mm x 500mm
Product Construction	Tufted Loop Pile	Tufted Cut Pile
Surface Yarn	ECONYL® Regenerated SDN	ECONYL® Regenerated SDN
Total Carpet Weight	4200 g/m²	4350 g/m²
Tufted Pile Weight	615 g/m²	750 g/m²
Primary Backing	Non-woven	Non-woven
Secondary Backing	Bitumen	Bitumen
Total Carpet Thickness	6.8mm	7.5mm
For full specification information visit www.gradus.com		



Broadloom



Quarter Turn



Environmental Profiles
Cert No. ENP 399

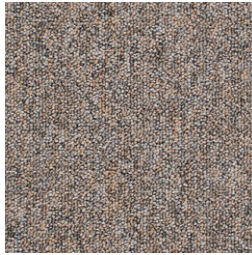
BRE Global (BREEAM):

Emphasis achieves either A+ or A across all BREEAM defined building applications against which it has been assessed.
For specific ratings visit: www.greenbooklive.com

Stratus



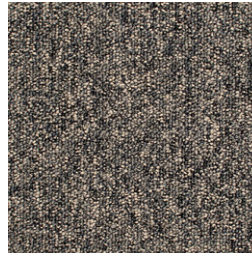
Stratus - Jet Stream 06506, Storm Surge 06504, Rainfall 06503, Avalanche 06509, Ocean Tide 06507 and Firestorm 06510



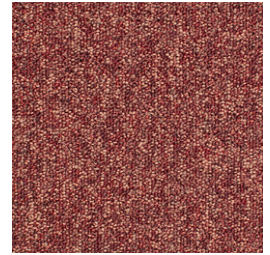
Avalanche 06509
LRV 16.27



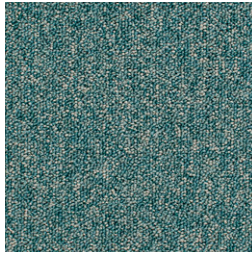
Arctic Mist 06512
LRV 13.94



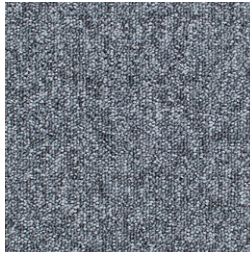
Typhoon 06502
LRV 8.73



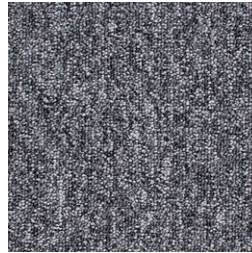
Firestorm 06510
LRV 7.96



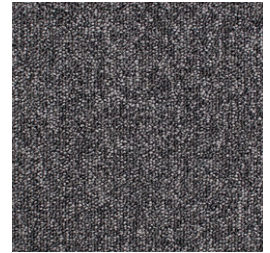
Valley Breeze 06501
LRV 9.45



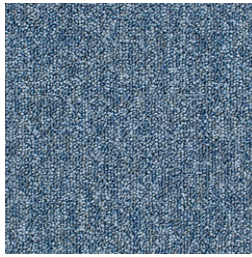
Rainfall 06503
LRV 11.47



Storm Surge 06504
LRV 6.16



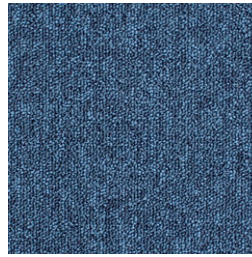
Jet Stream 06506
LRV 3.56



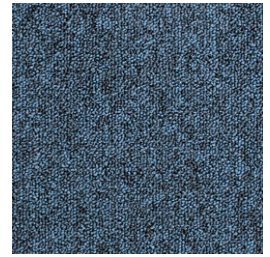
Ice Storm 06514
LRV 11.22



Ocean Tide 06507
LRV 7.50



Solar Blue 06513
LRV 3.71



Blue Ridge 06505
LRV 3.96

Samples

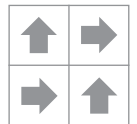
An accurate colour match can only be achieved by requesting the relevant product sample(s) from Gradus Technical Support on 01625 428922.



Specification:	Tile
Product Dimensions	500mm x 500mm
Product Construction	Tufted Loop Pile
Surface Yarn	ECONYL® Regenerated SDN
Total Carpet Weight	4585 g/m ²
Tufted Pile Weight	615 g/m ²
Primary Backing	Non-woven
Secondary Backing	Bitumen
Total Carpet Thickness	6.8mm
For full specification information visit www.gradus.com	



Broadloom



Quarter Turn

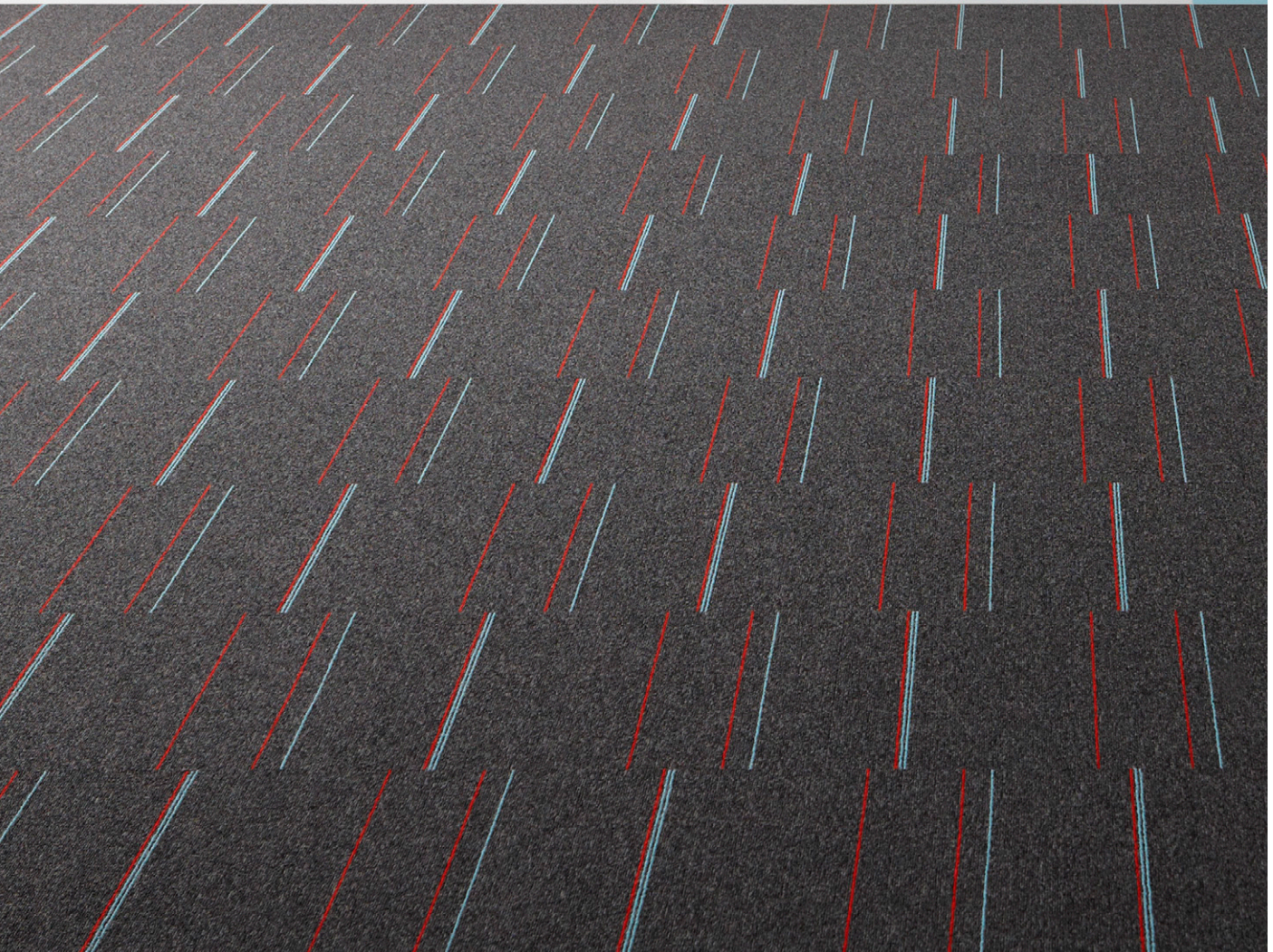
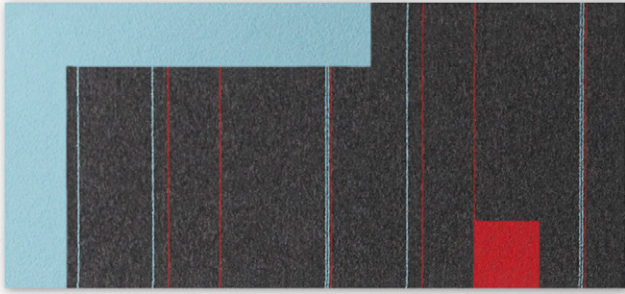


Environmental Profiles
Cert No. ENP 399

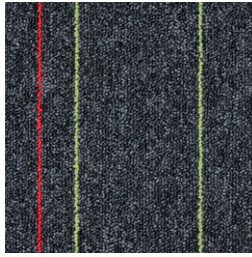
BRE Global (BREEAM):

Stratus achieves either A+ or A across all BREEAM defined building applications against which it has been assessed.
For specific ratings visit: www.greenbooklive.com

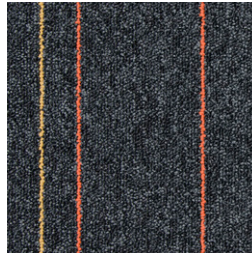
Stratus Stripe



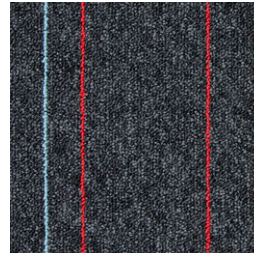
Stratus Stripe - Three 07003



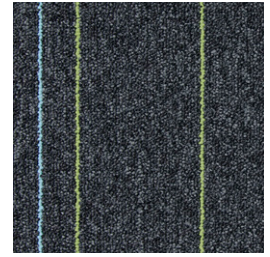
One 07001



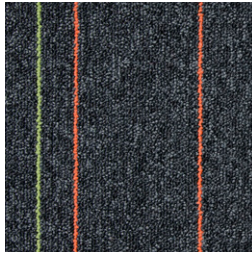
Two 07002



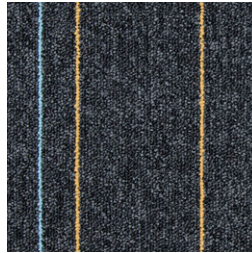
Three 07003



Four 07004



Five 07005



Six 07006

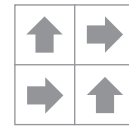
Samples

An accurate colour match can only be achieved by requesting the relevant product sample(s) from Gradus Technical Support on 01625 428922.

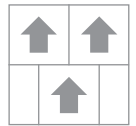


Specification:	Tile
Product Dimensions	500mm x 500mm
Product Construction	Tufted Loop Pile
Surface Yarn	ECONYL® Regenerated SDN
Total Carpet Weight	4585 g/m ²
Tufted Pile Weight	615 g/m ²
Primary Backing	Non-woven
Secondary Backing	Bitumen
Total Carpet Thickness	6.8mm

For full specification information visit www.gradus.com



Quarter Turn



Brick Bond



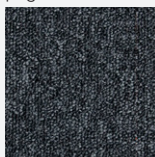
Environmental Profiles
Cert No. ENP 399

BRE Global (BREEAM):

Stratus Stripe achieves either A+ or A across all BREEAM defined building applications against which it has been assessed.
For specific ratings visit: www.greenbooklive.com

Stratus

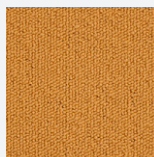
Ideal as a field tile,
page 42



Jet Stream

Emphasis

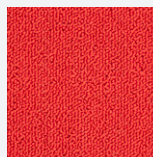
Ideal for accents and features to create interest, page 40



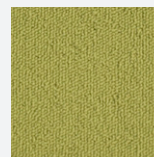
Gold



Orange



Red



Green



Sky

Adventurer



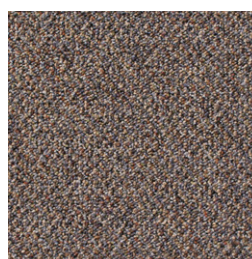
Adventurer - Lost Horizon 25016



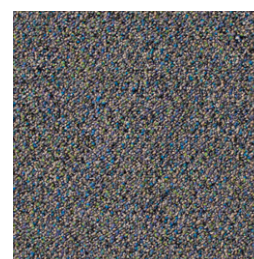
Sandstorm 25017
LRV 13.98



Cliff Shadow 25006
LRV 10.81



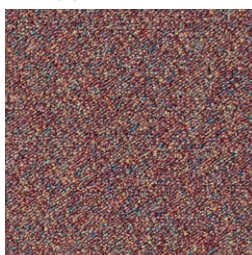
Nile Brown 25007
LRV 9.03



Blue Mountain 25008
LRV 9.70



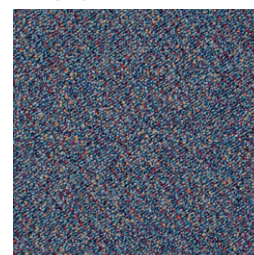
Lunar Gray 25003
LRV 9.82



Red Sands 25015
LRV 8.80



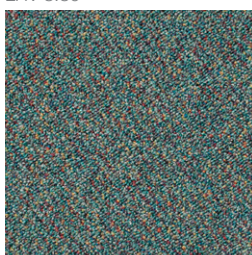
Kalahari 25013
LRV 9.28



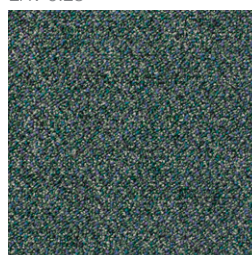
Seafarer 25012
LRV 10.67



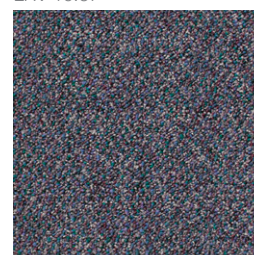
Aquarelle 25011
LRV 10.94



Gulf Stream 25009
LRV 10.50



Oregon Forest 25010
LRV 7.87



Lost Horizon 25016
LRV 7.42

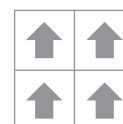
Samples

An accurate colour match can only be achieved by requesting the relevant product sample(s) from Gradus Technical Support on 01625 428922.

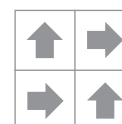


Specification:	Tile	Pvc Impervious
Product Dimensions	500mm x 500mm	2 metres
Product Construction	Tufted Loop Pile	Tufted Loop Pile
Surface Yarn	100% Solution Dyed Nylon	100% Solution Dyed Nylon
Total Carpet Weight	4380 g/m ²	4380 g/m ²
Tufted Pile Weight	500 g/m ²	500 g/m ²
Primary Backing	Non-woven	Non-woven
Secondary Backing	Bitumen	pvc
Total Carpet Thickness	6.2mm	6.9mm

For full specification information visit www.gradus.com



Broadloom



Quarter Turn



Environmental Profiles
Cert No. ENP 399

BRE Global (BREEAM):

Adventurer achieves either A+ or A across all BREEAM defined building applications against which it has been assessed.
For specific ratings visit: www.greenbooklive.com

Carezone



The Dementia Services Development Centre at the University of Stirling have undertaken a review of the Carezone range and have rated its design in relation to dementia design principles and its usability within a dementia-inclusive environment.

All Carezone colours are rated as Class 1a and are suitable for use in dementia applications. For an environment to be considered 'dementia-inclusive' careful consideration must be given to the specification of adjacent finishes with a maximum contrast of 10 points LRV between adjacent floor surfaces.

Carezone - Natural Truffle Cut Pile 07103

Textured Loop



Warm Stone Textured Loop
07115 LRV 18.75



Barley Mist Textured Loop
07120 LRV 19.56



Soft Taupe Textured Loop
07116 LRV 16.04



Natural Truffle Textured Loop
07117 LRV 9.96



Silver Sky Textured Loop
07119 LRV 14.20



Rich Granite Textured Loop
07118 LRV 4.75

Cut Pile



Warm Stone Cut Pile
07101 LRV 22.40



Barley Mist Cut Pile
07114 LRV 19.48



Soft Taupe Cut Pile
07102 LRV 18.70



Natural Truffle Cut Pile
07103 LRV 11.89



Lilac Heather Cut Pile
07107 LRV 12.37



Natural Hessian Cut Pile
07109 LRV 16.02



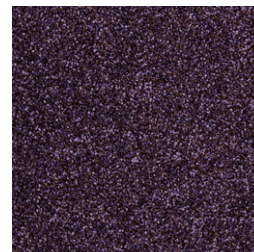
Silver Sky Cut Pile
07113 LRV 11.06



Rich Granite Cut Pile
07104 LRV 5.32



Autumn Leaves Cut Pile
07106 LRV 10.45



Velvet Damson Cut Pile
07108 LRV 4.04



Deep Blue Cut Pile
07112 LRV 5.94

Samples

An accurate colour match can only be achieved by requesting the relevant product sample(s) from Gradus Technical Support on 01625 428922.



Specification:	Textured Loop	Cut Pile
Product Dimensions	2 metres or 4 metres	2 metres or 4 metres
Product Construction	Tufted Loop Pile	Tufted Cut Pile
Surface Yarn	100% Polypropylene	100% Polypropylene
Total Carpet Weight	3125 g/m ²	3125 g/m ²
Tufted Pile Weight	1050 g/m ²	1050 g/m ²
Primary Backing	Woven Polypropylene	Woven Polypropylene
Secondary Backing	Aquabac Impervious	Aquabac Impervious
Total Carpet Thickness	8.5mm	10mm

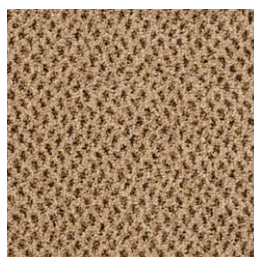
For full specification information visit www.gradus.com

Genus & Volnay

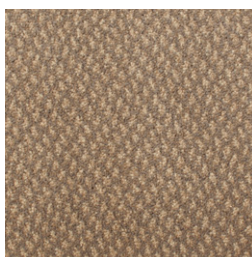


Genus - Cornfield 00225

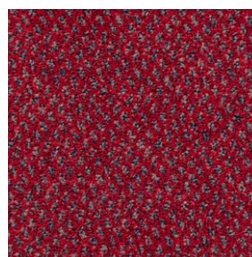
Genus



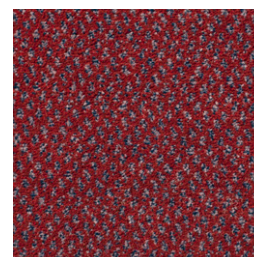
Cornfield 00225
LRV 17.44



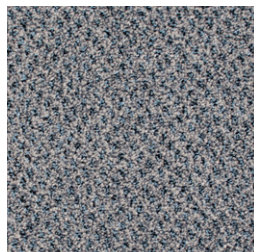
Beachwood 00245
LRV 11.76



Rich Red 00220
LRV 4.45



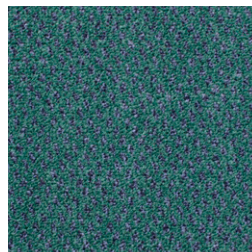
Ancient Ruby 00235
LRV 3.65



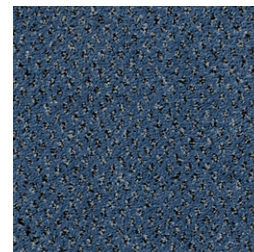
Black Forest 00209
LRV 12.15



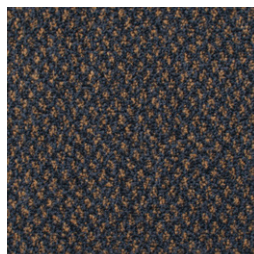
Silver Birch 00246
LRV 6.63



Thistle 00215
LRV 6.53



Winter Fjord 00216
LRV 5.46



Graphite Storm 00239
LRV 5.43



Environmental Profiles
Cert No. ENP 399

BRE Global (BREEAM):

Genus & Volnay achieve either A+ or A across all BREEAM defined building applications against which they have been assessed.

For specific ratings visit: www.greenbooklive.com

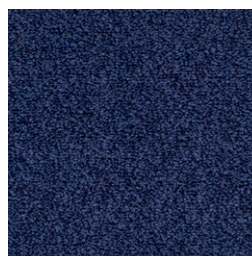
Volnay



Natural Straw 00318
LRV 21.68



Camouflage 00314
LRV 5.26



Azurite Blue 00322
LRV 2.84



Charcoal 00324
LRV 2.75

Samples

An accurate colour match can only be achieved by requesting the relevant product sample(s) from Gradus Technical Support on 01625 428922.

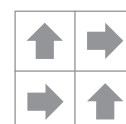


Specification:	Tile	Broadloom	Pvc Impervious
Product Dimensions	500mm x 500mm	4 metres	2 metres
Product Construction	Tufted Cut Pile	Tufted Cut Pile	Tufted Cut Pile
Surface Yarn	100% Marquésa SD	100% Marquésa SD	100% Marquésa SD
Total Carpet Weight	4375 g/m ²	2366 g/m ²	4605 g/m ²
Tufted Pile Weight	1085 g/m ²	1085 g/m ²	1085 g/m ²
Primary Backing	Non-woven	Woven Polypropylene	Non-woven
Secondary Backing	Bitumen	Woven Polypropylene	pvc
Total Carpet Thickness	9mm	8mm	8mm

For full specification information visit www.gradus.com



Broadloom



Quarter Turn

High Performance Contractor Carpet

- Competitively priced without compromising design or performance

Product range

NEW	Lafite Connect ^{Space}	54
	Lafite Connect	56 - 59
NEW	Latour ²	60
	Predator	62
	Bodega	64



NEW

Lafite Connect^{Space}

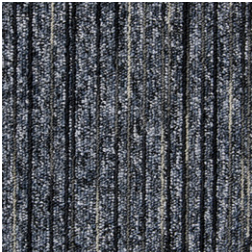


Lafite Connect Space - LCSPACE28, LCSPACE30, LCSPACE31 and LCSPACE33 with Emphasis - Green 104

Space Tile



LCSPACE28
LRV 10.24



LCSPACE29
LRV 7.84



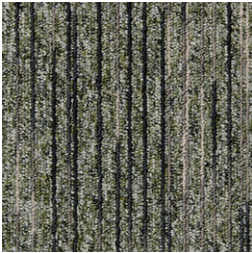
LCSPACE30
LRV 8.36



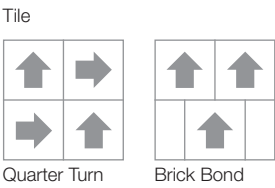
LCSPACE31
LRV 3.90



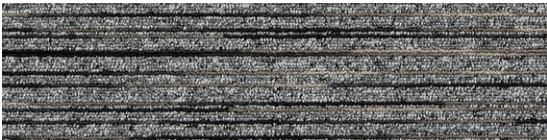
LCSPACE32
LRV 9.30



LCSPACE33
LRV 8.02



Space Plank



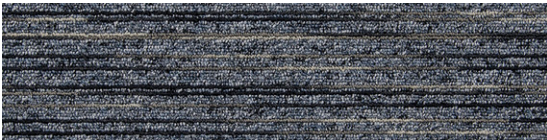
LCSPACE28
LRV 10.24



LCSPACE30
LRV 8.36



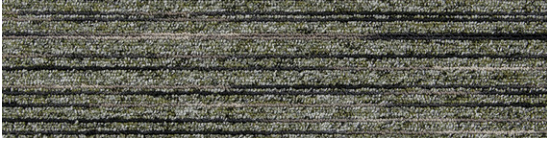
LCSPACE32
LRV 9.30



LCSPACE29
LRV 7.84



LCSPACE31
LRV 3.90

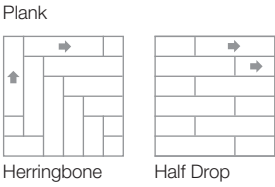


LCSPACE33
LRV 8.02

Samples
An accurate colour match can only be achieved by requesting the relevant product sample(s) from Gradus Technical Support on 01625 428922.



Specification:	Space Tile & Plank
Product Dimensions	Tile: 500mm x 500mm Plank: 250mm x 1000mm
Product Construction	Tufted Loop Pile
Surface Yarn	Solution Dyed Nylon & Space Dyed Nylon
Total Carpet Weight	4415 g/m ²
Tufted Pile Weight	540 g/m ²
Primary Backing	Non-woven
Secondary Backing	Bitumen
Total Carpet Thickness	5.9mm
For full specification information visit www.gradus.com	



BRE Global (BREEAM):
Lafite Connect Space achieves either A+ or A across all BREEAM defined building applications against which it has been assessed.
For specific ratings visit: www.greenbooklive.com

Lafite Connect



Lafite Connect - Plains LC12, Stripes LCS14 and Design LCD23 with Emphasis - Red 103

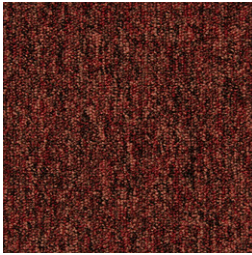
Plains



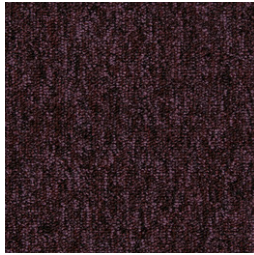
LC1
LRV 14.24



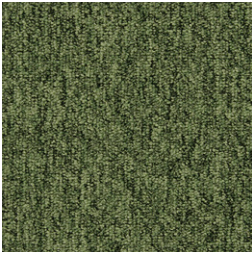
LC2
LRV 6.36



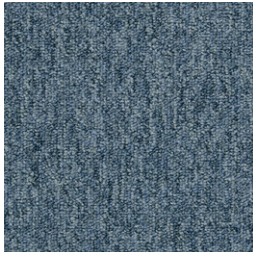
LC3
LRV 5.59



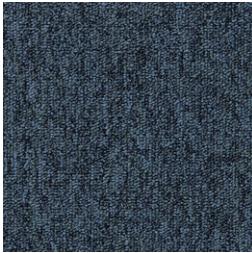
LC4
LRV 4.20



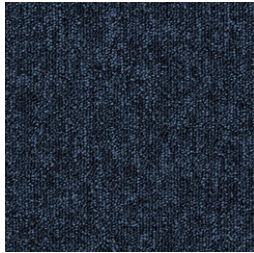
LC5
LRV 10.99



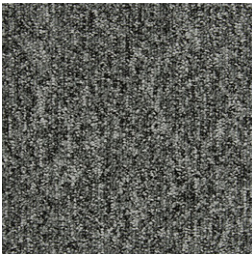
LC6
LRV 12.45



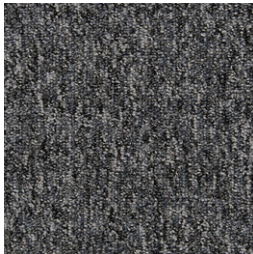
LC7
LRV 7.49



LC8
LRV 5.57



LC9
LRV 13.72



LC10
LRV 9.26



LC11
LRV 7.20



LC12
LRV 3.55

Lafite Connect features a range of complementary designs (Plains, Stripes, Design and Space) that can work together to create interesting and contemporary floor schemes. Lafite Connect yarn is complementary and blended across each design providing creativity and flexibility.

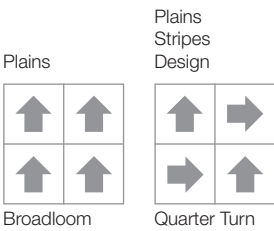
Samples

An accurate colour match can only be achieved by requesting the relevant product sample(s) from Gradus Technical Support on 01625 428922.



Specification:	Plains, Stripes & Design Tile
Product Dimensions	500mm x 500mm
Product Construction	Tufted Loop Pile
Surface Yarn	100% Aquafil Solution Dyed Nylon
Total Carpet Weight	4415 g/m ²
Tufted Pile Weight	540 g/m ²
Primary Backing	Non-woven
Secondary Backing	Bitumen
Total Carpet Thickness	5.9mm

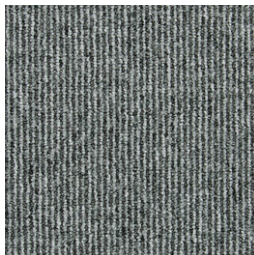
For full specification information visit www.gradus.com



BRE Global (BREEAM):
Lafite Connect achieves either A+ or A across all BREEAM defined building applications against which it has been assessed.
For specific ratings visit: www.greenbooklive.com

continued...

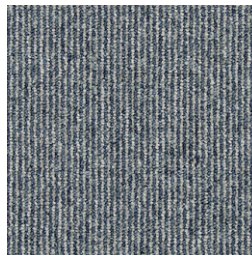
Stripes



LCS13
LRV 15.49



LCS14
LRV 6.96



LCS15
LRV 13.70



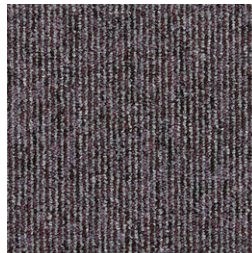
LCS16
LRV 8.48



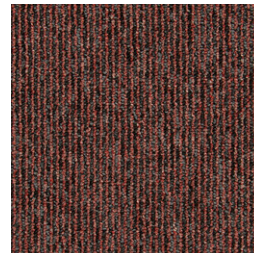
LCS17
LRV 9.19



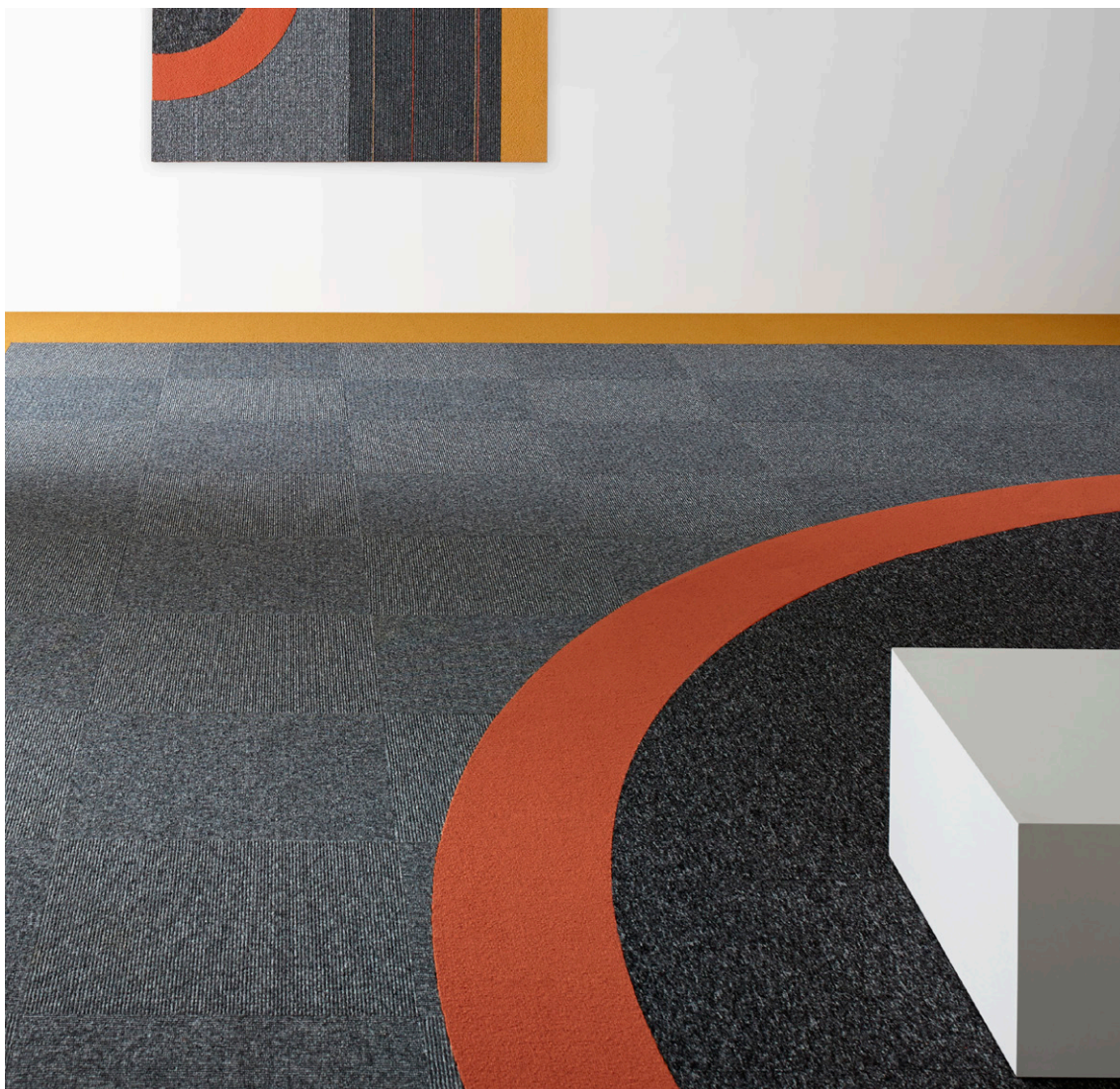
LCS18
LRV 8.16



LCS19
LRV 7.55

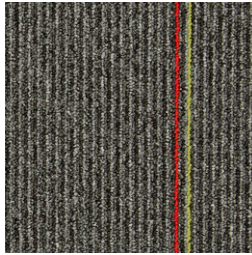


LCS20
LRV 5.19



Lafite Connect - Stripes LCS13 and Plains LC11 with Emphasis - Orange 102 and Gold 101

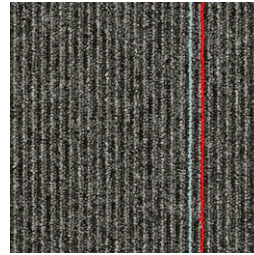
Design



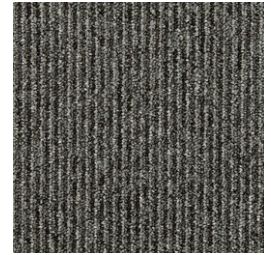
LCD21



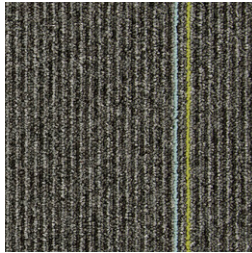
LCD22



LCD23



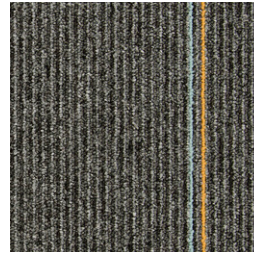
LCD27
LRV 5.69



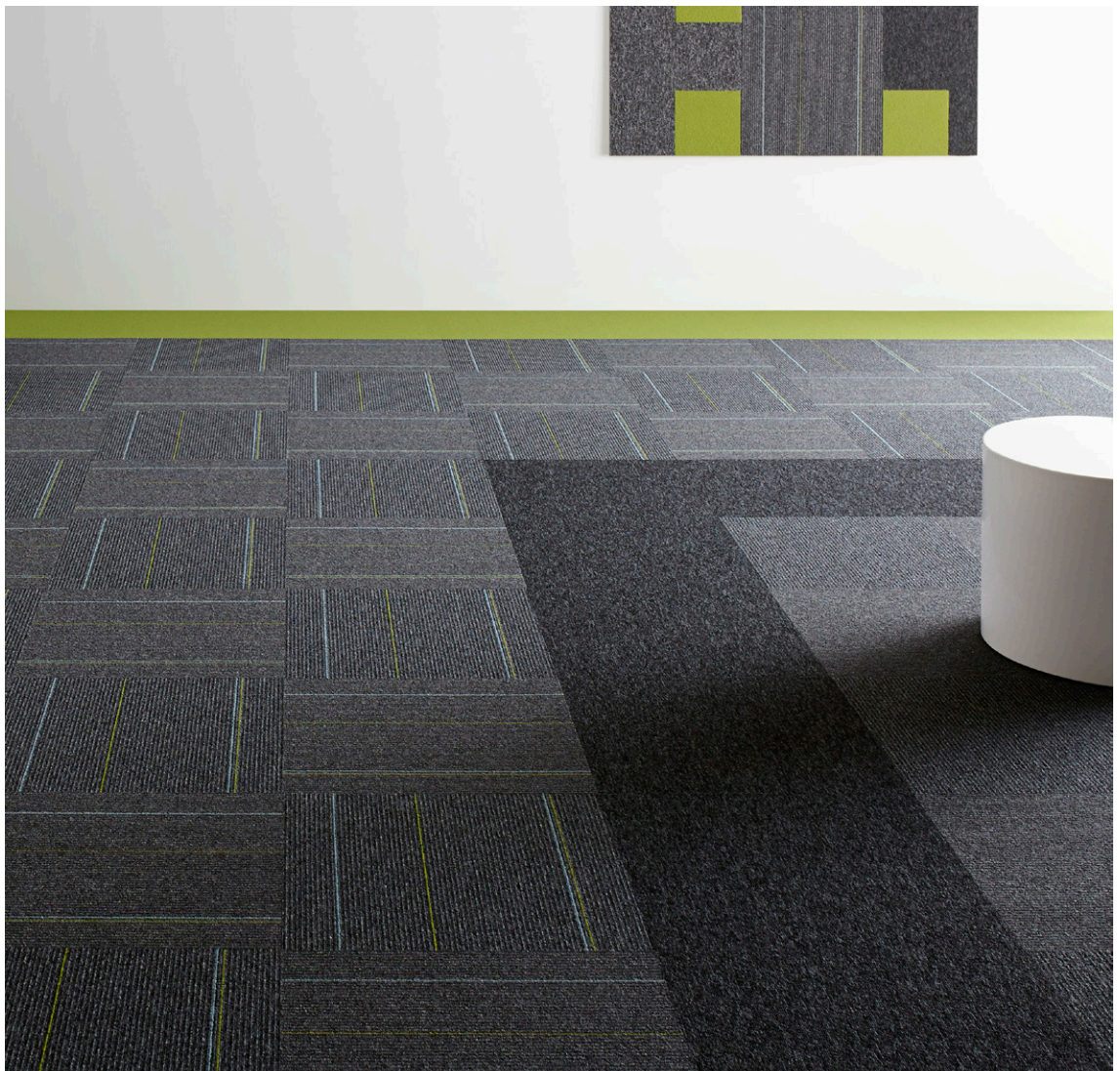
LCD24



LCD25



LCD26



Lafite Connect - Design LCD24, Plains LC12, Stripes LCS14 with Emphasis - Green 104

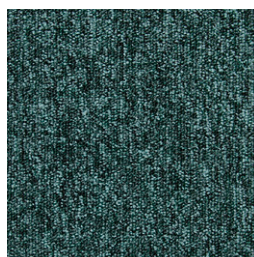
NEW

Latour²



Latour² - Plains Howden 01243, Stanton 08943, Dovedale 06043, Scafell 05143 and Wansdyke 00143

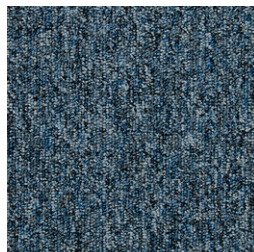
Plains



Glenavon 07143
LRV 6.07



Glandford 05043
LRV 5.90



Coniston 00243
LRV 6.51



Wansdyke 00143
LRV 4.12



Cheviot 01043
LRV 4.47



Torridon 09143
LRV 5.76



Howdale 01243
LRV 12.55



Arfon 04043
LRV 8.52



Dovedale 06043
LRV 6.33



Cairngorm 04143
LRV 3.50

Stripes



Ravenstone 02243
LRV 16.37



Morden 00300
LRV 10.58



Langdale 01143
LRV 8.51



Stanage 00900
LRV 8.95



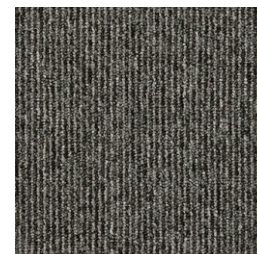
Scafell 05143
LRV 7.30



Staffin 00400
LRV 7.36



Stanton 08943
LRV 10.04



Alston 00500
LRV 8.17

Samples

An accurate colour match can only be achieved by requesting the relevant product sample(s) from Gradus Technical Support on 01625 428922.



Plains



Broadloom

Plains
Stripes



Quarter Turn

Specification:

Tile

Product Dimensions	500mm x 500mm
Product Construction	Tufted Loop Pile
Surface Yarn	100% Aquafil Solution Dyed Nylon
Total Carpet Weight	4320 g/m ²
Tufted Pile Weight	470 g/m ²
Primary Backing	Non-woven
Secondary Backing	Bitumen
Total Carpet Thickness	5.5mm

For full specification information visit www.gradus.com



Environmental Profiles
Cert No. ENP 399

BRE Global (BREEAM):

Latour² achieves either A+ or A across all BREEAM defined building applications against which it has been assessed.

For specific ratings visit: www.greenbooklive.com

Predator



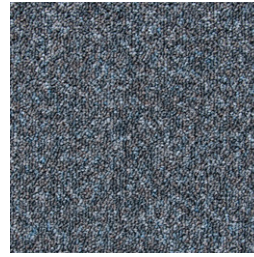
Predator - Osprey 03324, Hawk 03316, Lynx 03322, Piranha 03320, Barracuda 03305 and Stingray 03308



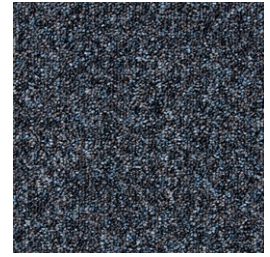
Hawk 03316
LRV 12.73



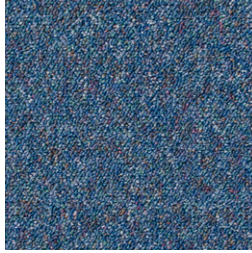
Lynx 03322
LRV 10.00



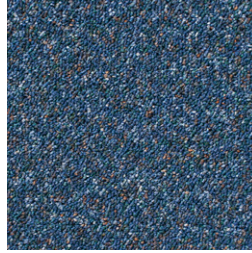
Wolf 03323
LRV 7.90



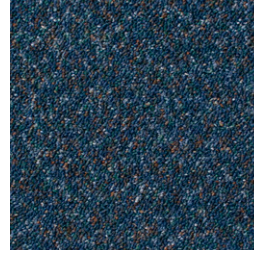
Osprey 03324
LRV 4.64



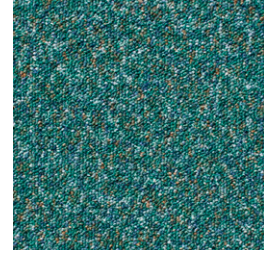
Barracuda 03305
LRV 9.84



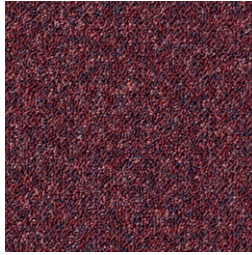
Stingray 03308
LRV 6.95



Orca 03303
LRV 6.06



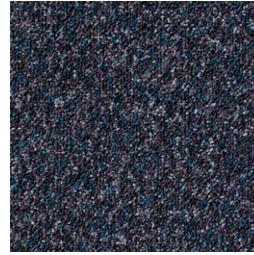
Python 03307
LRV 8.17



Piranha 03320
LRV 5.11



Puma 03301
LRV 8.07



Panther 03314
LRV 5.28

Samples

An accurate colour match can only be achieved by requesting the relevant product sample(s) from Gradus Technical Support on 01625 428922.



Specification:	Tile
Product Dimensions	500mm x 500mm
Product Construction	Tufted Loop Pile
Surface Yarn	100% Aquafil Nylon
Total Carpet Weight	4400 g/m ²
Tufted Pile Weight	525 g/m ²
Primary Backing	Non-woven
Secondary Backing	Bitumen
Total Carpet Thickness	6.5mm
For full specification information visit www.gradus.com	



Broadloom



Quarter Turn



Environmental Profiles
Cert No. ENP 399

BRE Global (BREEAM):

Predator achieves either A+ or A across all BREEAM defined building applications against which it has been assessed.
For specific ratings visit: www.greenbooklive.com

Bodega



Bodega - Soft Sage 03825



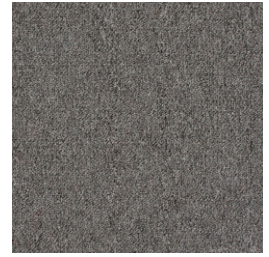
Oatmeal 03807
LRV 16.72



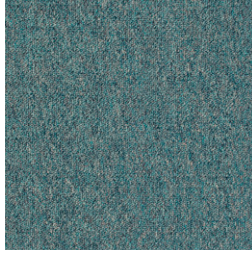
Barley 03816
LRV 15.94



Soft Sage 03825
LRV 14.34



Anthracite 03808
LRV 9.05



Mermaid 03812
LRV 8.67



Marine Blue 03823
LRV 7.46

Samples

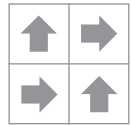
An accurate colour match can only be achieved by requesting the relevant product sample(s) from Gradus Technical Support on 01625 428922.



Specification:	Tile	Broadloom	Aquabac Impervious
Product Dimensions	500mm x 500mm	4 metres	2 metres or 4 metres *
Product Construction	Tufted Loop Pile	Tufted Loop Pile	Tufted Loop Pile
Surface Yarn	100% Polypropylene	100% Polypropylene	100% Polypropylene
Total Carpet Weight	4500 g/m ²	1906 g/m ²	2750 g/m ²
Tufted Pile Weight	678 g/m ²	678 g/m ²	678 g/m ²
Primary Backing	Non-woven	Woven Polypropylene	Woven Polypropylene
Secondary Backing	Bitumen	Woven Polypropylene	Aquabac
Total Carpet Thickness	6mm	6mm	6.5mm

For full specification information visit www.gradus.com

* Minimum quantity 300 sq metres, a maximum of 5% overage applies.



Quarter Turn



Broadloom



Environmental Profiles
Cert No. ENP 399

BRE Global (BREEAM):

Bodega achieves either A+ or A across all BREEAM defined building applications against which it has been assessed.

For specific ratings visit: www.greenbooklive.com

Hybrid Barrier Matting

- A range of modular barrier matting products ideal for use in interior entrances and access points. Hybrid barrier matting is quick and easy to install and can be cut and trimmed on-site
- Hybrid barrier matting can be used as a stand-alone mat or can be used in conjunction with secondary barrier matting

Product range

NEW	Mat-in-a-Box 6000	69
NEW	Mat-in-a-Box 5000	70
NEW	Mat-in-a-Box 1550	71
	Access 6000	73
	Access 5000	73



NEW

Mat-in-a-Box®

A modular barrier matting system that is quick and easy to install



Mat-in-a-Box 6000 - Shadow

Mat-in-a-Box® 6000



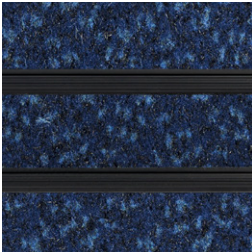
Shadow



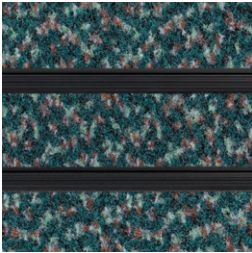
Nickel



Indigo



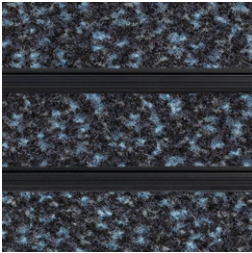
Atlantic



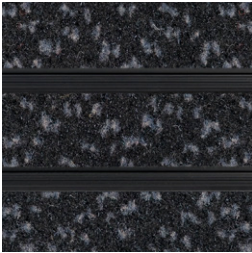
Rosemary



Walnut



Galaxy



Nightfall

Samples

An accurate colour match can only be achieved by requesting the relevant product sample(s) from Gradus Technical Support on 01625 428922.



Specification:	Mat-in-a-Box 6000
Product Dimensions	2 metre lengths
Base	Black PVC-u
Wiper	ECONYL® Regenerated SDN
Construction	Closed
Total Thickness	12mm and 18mm
Supplied in components	Standard box contains 2 square metres (16 x 2m lengths), edging strip (1 x 2m) and support piece (1 x 2m)
For full specification information visit www.gradus.com	

Mat-in-a-Box® 5000



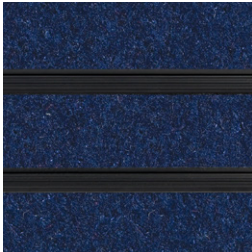
Corncrake



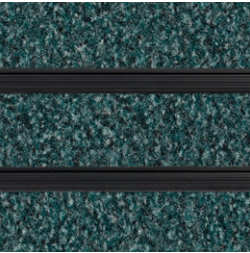
Kestrel



Redpoll



Swallow



Shelduck



Cuckoo



Falcon



Moorhen

Samples

An accurate colour match can only be achieved by requesting the relevant product sample(s) from Gradus Technical Support on 01625 428922.



Specification:	Mat-in-a-Box 5000
Product Dimensions	2 metre lengths
Base	Black PVC-u
Wiper	ECONYL® Regenerated SDN
Construction	Closed
Total Thickness	12mm and 18mm
Supplied in components	Standard box contains 2 square metres (16 x 2m lengths), edging strip (1 x 2m) and support piece (1 x 2m)

For full specification information visit www.gradus.com

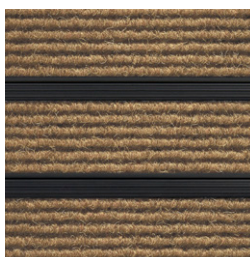


Jackdaw

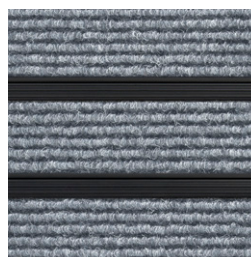


Mat-in-a-Box 5000 - Cuckoo

Mat-in-a-Box® 1550



Terra



Calculus



Tempestas

Samples

An accurate colour match can only be achieved by requesting the relevant product sample(s) from Gradus Technical Support on 01625 428922.



Specification:	Mat-in-a-Box 1550
Product Dimensions	2 metre lengths
Base	Black PVC-u
Wiper	100% Polypropylene
Construction	Closed
Total Thickness	12mm
Supplied in components	Standard box contains 2 square metres (16 x 2m lengths), edging strip (1 x 2m) and support piece (1 x 2m)

For full specification information visit www.gradus.com



Mat-in-a-Box 1550 - Calculus

Access[®]

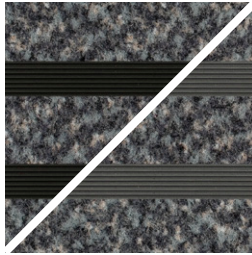
A modular barrier matting system that is quick and easy to install



Access 5000 - Moorhen (grey base)

All colours available in Black or Grey bases

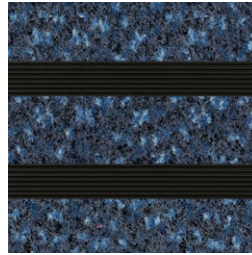
Access® 6000



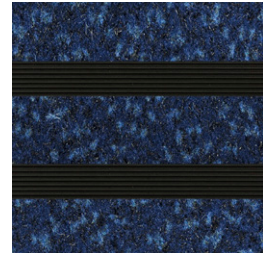
Shadow



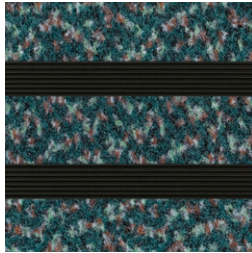
Nickel



Indigo



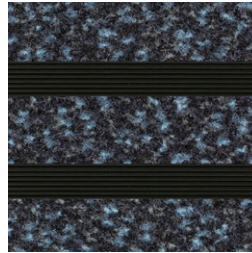
Atlantic



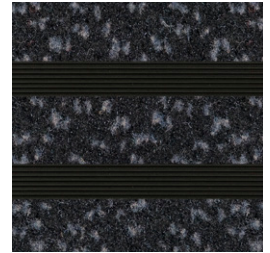
Rosemary



Walnut



Galaxy



Nightfall

Access® 5000



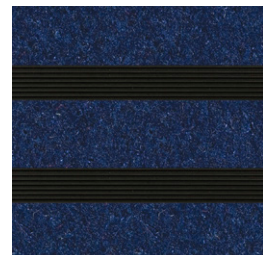
Corncrake



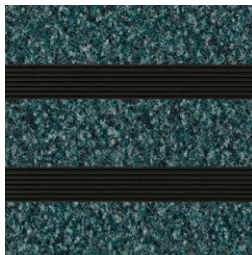
Kestrel



Redpoll



Swallow



Shelduck



Cuckoo



Falcon



Moorhen



Jackdaw

Samples

An accurate colour match can only be achieved by requesting the relevant product sample(s) from Gradus Technical Support on 01625 428922.



Specification:	Access 6000 & 5000
Product Dimensions	0.5m x 2m modules
Base	Black or Grey Rubber
Wiper	ECONYL® Regenerated SDN
Construction	Closed
Total Thickness	12mm and 17mm
Supplied in components	0.5m x 2m modules and supplied oversized for shaping and trimming on-site. Supplied with spacer strips
For full specification information visit www.gradus.com	

Secondary Barrier Matting

- High performance secondary barrier matting provides a solution for entrances, breakout areas or any heavy duty traffic area where contamination needs to be treated effectively
- Unique yarn system removes soil from foot traffic whilst absorbing moisture and being easy to clean
- Colours and designs complement any design scheme

Product range

Boulevard 7000	76
Boulevard Stripe	78
Boulevard 6000	80
Boulevard 5000	82
Boulevard 1500	84



Boulevard 7000



Boulevard 7000 - Black Ash



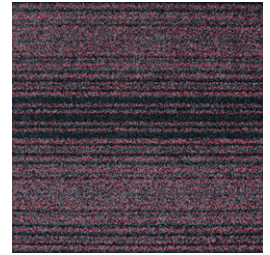
Black Ash
LRV 3.06



Gray Birch
LRV 5.60



Hazelnut
LRV 2.37



Red Oak
LRV 1.98

Samples

An accurate colour match can only be achieved by requesting the relevant product sample(s) from Gradus Technical Support on 01625 428922.



Specification:	Sheet
Product Dimensions	+/- 20m x 2m
Product Construction	Tufted Cut Pile
Surface Yarn	100% Solution Dyed Nylon
Total Carpet Weight	+/- 3525 g/m ²
Tufted Pile Weight	+/- 825 g/m ²
Primary Backing	Non-woven Polyester/Polyamide
Secondary Backing	pvc
Total Carpet Thickness	+/- 8mm
For full specification information visit www.gradus.com	

Boulevard Stripe



Boulevard Stripe - Magpie and Boulevard 5000 - Cuckoo with Times Square - Lime 06606



Magpie
LRV 3.85



Raven
LRV 2.48

Samples

An accurate colour match can only be achieved by requesting the relevant product sample(s) from Gradus Technical Support on 01625 428922.

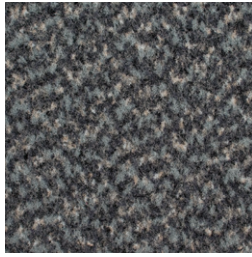


Specification:	Sheet
Product Dimensions	25m x 2m
Product Construction	Tufted Cut Pile
Surface Yarn	ECONYL® Regenerated SDN
Total Carpet Weight	4300 g/m ²
Tufted Pile Weight	800 g/m ²
Primary Backing	Non-woven
Secondary Backing	pvc
Total Carpet Thickness	9mm
For full specification information visit www.gradus.com	

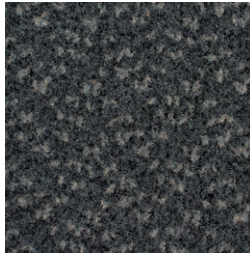
Boulevard 6000



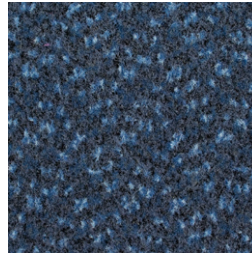
Boulevard 6000 - Nightfall



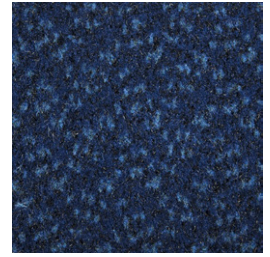
Shadow
LRV 5.36



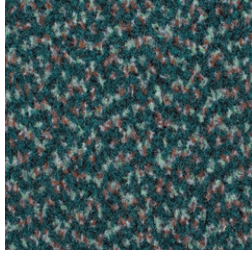
Nickel
LRV 3.70



Indigo
LRV 4.01



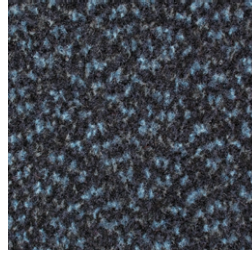
Atlantic
LRV 1.90



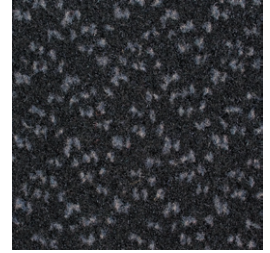
Rosemary
LRV 4.45



Walnut
LRV 2.86



Galaxy
LRV 2.56



Nightfall
LRV 1.48

Samples

An accurate colour match can only be achieved by requesting the relevant product sample(s) from Gradus Technical Support on 01625 428922.



Specification:	Tile	Sheet
Product Dimensions	500mm x 500mm	25m x 2m
Product Construction	Tufted Cut Pile	Tufted Cut Pile
Surface Yarn	ECONYL® Regenerated SDN	ECONYL® Regenerated SDN
Total Carpet Weight	4750 g/m ²	4750 g/m ²
Tufted Pile Weight	950 g/m ²	950 g/m ²
Primary Backing	Non-woven	Non-woven
Secondary Backing	Bitumen	pvc
Total Carpet Thickness	9mm	8mm
For full specification information visit www.gradus.com		



Broadloom



Environmental Profiles
Cert No. ENP 399

BRE Global (BREEAM):

For specific ratings visit: www.greenbooklive.com

Boulevard 5000



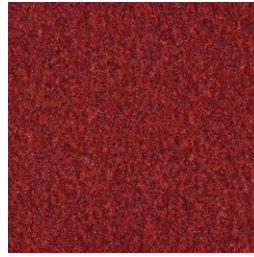
Boulevard 5000 - Redpoll with Times Square - Red 06605



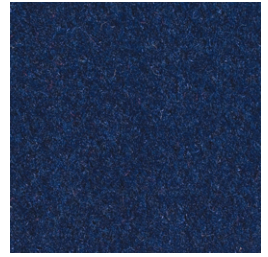
Corncrake
LRV 9.52



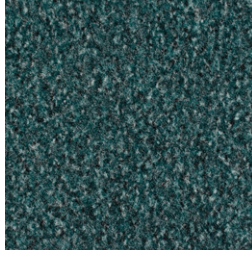
Kestrel
LRV 5.42



Redpoll
LRV 4.14



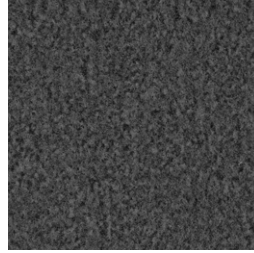
Swallow
LRV 2.08



Shelduck
LRV 5.20



Cuckoo
LRV 5.63



Falcon
LRV 5.11



Moorhen
LRV 2.98



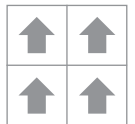
Jackdaw
LRV 1.73

Samples

An accurate colour match can only be achieved by requesting the relevant product sample(s) from Gradus Technical Support on 01625 428922.



Specification:	Tile	Sheet
Product Dimensions	500mm x 500mm	25m x 2m
Product Construction	Tufted Cut Pile	Tufted Cut Pile
Surface Yarn	ECONYL® Regenerated SDN	ECONYL® Regenerated SDN
Total Carpet Weight	4600 g/m ²	4600 g/m ²
Tufted Pile Weight	800 g/m ²	800 g/m ²
Primary Backing	Non-woven	Non-woven
Secondary Backing	Bitumen	pvc
Total Carpet Thickness	8mm	7.5mm
For full specification information visit www.gradus.com		



Broadloom

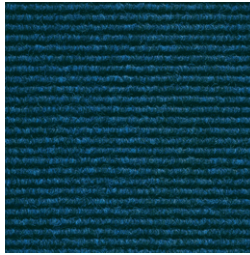
Boulevard 1500



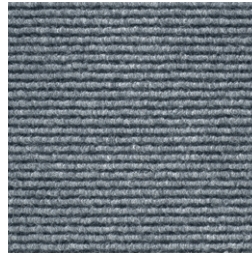
Boulevard 1500 - Terra



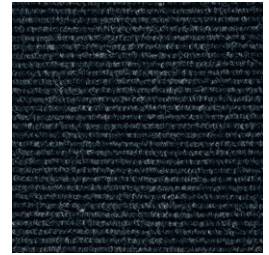
Terra
LRV 10.89



Marinus
LRV 2.71



Calculus
LRV 9.03



Tempestas
LRV 2.14

Samples

An accurate colour match can only be achieved by requesting the relevant product sample(s) from Gradus Technical Support on 01625 428922.



Specification:	Sheet
Product Dimensions	15m x 2m
Product Construction	Needlepunch
Surface Yarn	100% Polypropylene
Total Carpet Weight	3000 g/m ²
Tufted Pile Weight	1600 g/m ²
Backing	Rubber
Total Carpet Thickness	9mm
For full specification information visit www.gradus.com	

Lok-Lift Dry Adhesive Mesh



ECO FRIENDLY
LOK-LIFT[®]
DRY ADHESIVE



Dry adhesive mesh for peelable carpet fixing

Fully releasable environmentally friendly installation system for commercial use.

- Totally recyclable
- Quick, easy and clean installation and removal
- No odours or VOC problems, which are commonly associated with wet adhesives
- Ideal for both broadloom and carpet tile installations
- Installs and performs over virtually any surface, including carpet, concrete and vinyl
- Permits instant re-use of the floor
- Pressure sensitive bond becomes stronger in use
- Highly resistant to rolling loads
- Dry bond adhesive mesh creates total edge to edge adhesion between carpet and sub surface

Lok-Lift permits carpet to be laid on many existing floor finishes saving costs and time, whilst avoiding mess and disruption.

Case Studies

The following pictures show various installations for Gradus carpets:



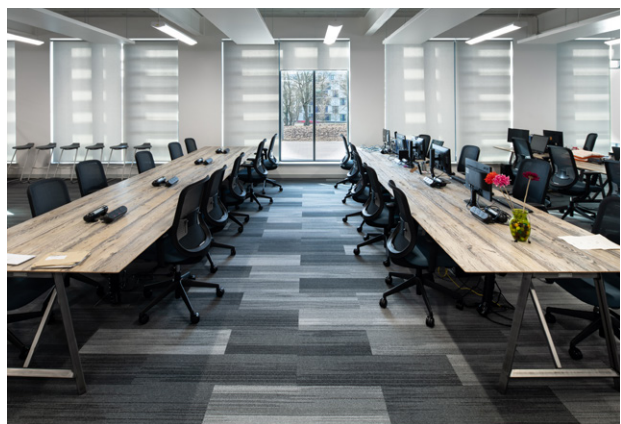
Humber Enterprise Park
Lafite Connect^{Space} LCSPACE30



New Look Retailers, Weymouth Support Centre
Times Square - Grey 06601



Elizabeth Line Depot at Old Oak Common
Cityscene - Basalt 06110 and Granite 06109 with Emphasis - Red 103



University of Essex
Urban Myth - Lead 07304, Steel 07303 and Sapphire 07310



Laura Mitchell Health & Wellbeing Centre, Halifax
Streetwise Design - Originals Iron 773 and Flint 772



GradPad Wood Lane Studios, London
Times Square - Grey 06601 and Natural 06602



The Meadows School, Leek
Adventurer - Lost Horizon 25016



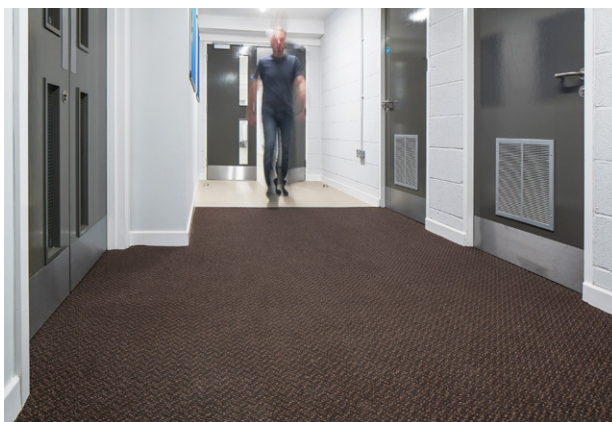
Walkden High School
Stratus - Storm Surge 06504



The Spire Hospital, Southampton
Cityscene - Shale 06106



Nuffield Health, The Grosvenor Hospital, Chester
Genus - Cornfield 00225



Tranmere Rovers Training Ground - Solar Campus
Boulevard 6000 - Walnut



Steel City House, Sheffield
Times Square - Grey 06601

GRADUS

Gradus Carpets Park Green Macclesfield Cheshire SK11 7LZ UK Tel: 01625 859000

For enquiries outside the UK and Eire contact Gradus International on +44 (0)1625 613780

call: 01625 859000

www.gradus.com



This catalogue supersedes and replaces all previous issues.

All designs, images and illustrations contained within this catalogue remain the copyright of Gradus Ltd.©
All trademarks, product names and codes detailed within this catalogue are the property of Gradus Ltd.